

April 29 – May 1, 2025 | Boston, MA

[www.glp-1-based-therapeutics.com](http://www.glp-1-based-therapeutics.com)



2nd Annual

# GLP-1-Based Therapeutics Summit

**Advance Specialised, Durable,  
& Efficacious GLP-1 Agonists  
& Investigate the Commercial  
Opportunity in Pipeline &  
Indication Expansion**

## Expert Speakers Include:



**Damian Bialonczyk**  
Global Medical Lead  
– Metabolism  
**Roche**



**Belle van Rosmalen**  
Director – Incretin  
Outcomes  
**Eli Lilly & Co.**



**Hong Chen**  
Director – Search &  
Evaluation  
**Novo Nordisk**



**Johan Paulsson**  
Director – Incretin &  
Amylin Biology  
**Novo Nordisk**



**Jay Caplan**  
President & Founder  
**Fractyl Health**



**David Glass**  
Vice President  
– Research  
**Regeneron**

Proud to Partner With:



+1 617 455 4188 @ [info@hansonwade.com](mailto:info@hansonwade.com)

[www.glp-1-based-therapeutics.com](http://www.glp-1-based-therapeutics.com) Obesity, NASH, & CVRM Drug Development



WELCOME

EXPERT SPEAKERS

AGENDA

PARTNER WITH US

REGISTER YOUR PLACE



# Welcome to the Definitive GLP-1 Innovation Forum

2nd Annual  
GLP-1-Based  
Therapeutics Summit  
April 29 – May 1 | Boston, MA

GLP-1s dominated headlines in 2024, with an explosion of groundbreaking developments, investment and promising clinical data expected to continue into 2025.

With competition rife between industry giants including **Eli Lilly**, **Novo Nordisk**, **Roche**, and **Astra Zeneca**, along with innovative biotechs like **Terns**, **Altimune** and **Metsera** all making strides in their clinical development, GLP-1s are the therapeutic on everyone's minds.

GLP-1s have proven their value in obesity and diabetes, however a new wave GLP-1 therapeutics to treat MASH, sleep apnea, age-related diseases, neurodegeneration, and addiction, have GLP-1s being coined a 'magic bullet' in the future of improving human health and disease. Some going as far as to argue that GLP-1s are positioned to transform health economics in the next 20 years.

As the landscape continues to evolve at an unprecedented rate, the **2nd GLP-1-Based Therapeutics Summit** is the crucial, dedicated, platform for leaders and decision-makers to connect, collaborate, and shape the future of this transformative field as the patient population is everchanging and demand is higher than ever.

Be part of the conversation and at the forefront of the future of GLP-1-Based Therapeutics, join 100+ C-level executives, decision-makers, and scientists at the industry's forum to discuss:

- Discussing the potential of GLP-1 therapies in **new therapeutic areas** beyond diabetes and obesity, such as cardiovascular, renal, metabolic diseases, sleep apnoea, and neurodegenerative diseases
- Exploring **combination therapies** and **improving the efficacy** of GLP-1s to prevent muscle wasting and improve muscle function
- Addressing challenges and advancements in the **formulation** and **delivery** of GLP-1s including injectable, oral, and inhaled formulations
- Highlighting **innovative clinical trial design** and **endpoints** for GLP-1s with a focus on measuring long term outcomes and real world evidence as the world is experiencing the effects of the GLP-1 phenomena

## What Our Speakers Have to Say:

Intimate setting with well qualified speakers

**Rejuvenate Biomed**

Speakers were GLP-1 experts. I enjoyed the roundtable format and speed networking

**Cirius Therapeutics**

Great interactive discussions, spanning the whole GLP-1 field.

**Regor Therapeutics**

Excellent content and speake

**Eilte Research Network**

## KEY BENEFITS OF ATTENDING



Navigate the expansion of GLP-1s into novel areas including MASH, age-related diseases, and neurology with **Eli Lilly**, **Regeneron** and **Neuraly**



Explore the enhancement of GLP-1 efficacy and tolerability through combination of analogues for improved patient experience with **Roche** and **i20 Therapeutics**



Delve into innovative clinical trial designs used in GLP-1 trials to help overcome the lack of placebo populations as the number GLP-1 patients increase to ensure trial validity with **Eli Lilly & Co** and **Altimune**



Discuss how novel formulations such as oral and gene therapy based GLP-1s will affect future patient adherence and aid in the development digital health interventions with the **National Academy of Sports Medicine**, **Fractyl Health**, and **Novo Nordisk**



**NEW Workshop:** Delving into the mechanisms of GLP-1 agonists and the wider affects the therapeutics have on the body to understand the off-target effects and potential for treating indications beyond with **Novo Nordisk** and **I20 Therapeutics**

WELCOME

EXPERT SPEAKERS

AGENDA

PARTNER WITH US

REGISTER YOUR PLACE

2

+1 617 455 4188 @ info@hansonwade.com

www.glp-1-based-therapeutics.com Obesity, NASH, & CVRM Drug Development

hansonwade



# New for 2025

2nd Annual  
GLP-1-Based  
Therapeutics Summit  
April 29 – May 1 | Boston, MA






**Search & Evaluation, Partnerships & Investment Panel:** Glp-1 senior executives from Novo Nordisk and Fractyl Health will dive into the scientific and commercial factors of setting up a successful partnership to develop GLP-1-based therapeutics for indications in obesity and beyond. Ask your burning questions on key milestones and where the field is headed next.



**Workshop Day:** Exploring advancements in the understanding of GLP-1 mechanisms for the discovery & development of combination therapies to allow for enhanced therapeutic design and GLP-1s with increased efficacy and durability

## GLP-1 Development – Where is the Field in 2025?

### Approved GLP-1s

Company	Year of Approval	Drug Name	Formulation	Efficacy
 novo nordisk	2014	Saxenda (Liraglutide)	Twice daily injection	7% weight loss in 56 weeks
 novo nordisk	2021	Wegovy/Ozempic (Semaglutide)	Once weekly injection	10% weight loss in 104 weeks
 Lilly	2023	Mounjaro/Zepbound (Tirzepatide)	Once weekly injection	21% weight loss in 72 weeks

### Overview of GLP-1s in Clinical Development



WELCOME

EXPERT SPEAKERS

AGENDA

PARTNER WITH US

REGISTER YOUR PLACE



# Your 20+ Expert Speakers

2nd Annual  
GLP-1-Based  
Therapeutics Summit  
April 29 – May 1 | Boston, MA

WELCOME

EXPERT SPEAKERS

AGENDA

PARTNER WITH US

REGISTER YOUR PLACE



**Damian Bialonczyk**  
Global Medical Lead -  
Metabolism  
**Roche**



**Andrew Young**  
Chief Scientific & Medical  
Officer  
**I2O Therapeutics**



**Jay Caplan**  
President & Founder  
**Fractyl Laboratories Inc.**



**Belle van Rosmalen**  
Director - Incretin  
Outcomes  
**Eli Lilly & Co.**



**Jacek Mokrosinski**  
Senior Scientist  
**Novo Nordisk**



**Hong Chen**  
Director - Search &  
Evaluation  
**Novo Nordisk**



**Jerry Colca**  
Chief Scientific Officer  
**Cirius Therapeutics**



**Adam Bell**  
Vice President -  
Translational Medicine &  
Regulatory Affairs  
**Neuraly**



**Marco Falasca**  
Professor  
**Universita Degli Studi Di  
Parma**



**Scott Harris**  
Chief Medical Officer  
**Altimmune**



**Zohar Barbash**  
Chief Technology Officer  
**Lembas Bio**



**Elisa Araldi**  
Assistant Professor  
**Universita Degli Studi Di  
Parma**



**David Bearss**  
Co-Founder & Chairman  
**Biolexis Therapeutics**



**David Glass**  
Vice President – Research  
**Regeneron  
Pharmaceuticals**



**Jason Mastaitis**  
Senior Principal Scientist  
**Regeneron  
Pharmaceuticals**



**Johan Paulsson**  
Director - Incretin & Amylin  
Biology  
**Novo Nordisk**



**Robert A. Beardsley**  
President & Chief  
Executive Officer  
**Cirius Therapeutics**



**Ansarullah, PhD**  
Associate Director -  
Metabolic Phenotyping  
Core, Centre for  
Biometric Analysis  
**The Jackson  
Laboratory**



**Jennifer Linge**  
Chief Scientific Officer  
**AMRA Medical**



**Simon Bruce, MD**  
Vice President, Drug  
Development Solutions  
**ICON**



**Martin Schain**  
Director - PET Imaging  
**Antaros Medical**



# Your 20+ Expert Speakers

2nd Annual  
**GLP-1-Based  
Therapeutics Summit**  
April 29 – May 1 | Boston, MA

WELCOME

EXPERT SPEAKERS

AGENDA

PARTNER WITH US

REGISTER YOUR PLACE



**Caitlin Langford, Ph.D.**  
Senior Director of Product, Pharma Solutions  
**Perspectum**



**Mike Fantigrassi**  
Head of Product  
**National Academy of Sports Medicine**



**Mitchell Steiner**  
Chairman & Chief Executive Officer  
**Veru**



**Iris Grossman**  
Chief Therapeutics Officer  
**Eleven Therapeutics**



**Ann Belien**  
Founder & CEO  
**Rejuvenate Biomed**



**Alessandra Vignola**  
President - Cardiovascular & Metabolic Business Unit  
**Worldwide Clinical Trials**



**Natalia Castro**  
Executive Director  
**Worldwide Clinical Trials**



**Brad Swanson, PhD**  
Bioassays and Metabolic Assays for Evaluating GLP-1, GIP, and Glucagon Therapeutics  
**Promega**



**David Anderson, PhD**  
Director, Science & Innovation  
**Clinical Ink**



**Taysir Bader**  
Biopharma Specialist  
**Waters Corporation**



**Justin Goodarz**  
Chief Commercial Officer  
**Verified Clinical Trials**



**Dr Matt Wilson**  
Founder & CEO  
**uMed**

Relevant and interesting content. Great networking opportunity!

**Rhythm Pharamceuticals**



# Pre-Conference Workshop Day

## April 29, 2025

2nd Annual  
**GLP-1-Based  
Therapeutics Summit**  
April 29 – May 1 | Boston, MA

### Registration & Coffee

8.30

### Workshop A

9:00 - 12:00

#### Advancing Understanding of GLP-1 Mechanisms for the Discovery & Development of Combination Therapies & Enhanced Therapeutic Design

Join this session to deepen your understanding of GLP-1's multifaceted role in metabolic regulation. Gain insights into the intricate intracellular signaling pathways activated by GLP-1, unravel the gut-brain axis and its influence on appetite and explore the unique advantages of GLP-1 combination therapies. Elucidating the intracellular signaling pathways activated by GLP-1 stimulation

- Uncovering the gut-brain axis and exploring the neural pathways involved in GLP-1 mediated appetite regulation and satiety
- Delving into GLP-1 vs GIP mechanisms: what makes this the ideal combination?
- Exploring and identifying drug combinations that target different aspects of metabolic dysfunction and work towards complementary mechanisms of action
- Understanding the basic mechanism of amylin analogs that increases efficacy of GLP-1
- Diving into the synergistic effects of drug combinations to amplify the therapeutics benefits of GLP-1 agonists such as DPP-4 and SGLT2 inhibitors
- Improving the tolerability of combination therapies from a mechanistic viewpoint
- Discussing the limitations of genetic resistance to GLP-1s and discussing the options to improve outcomes for GLP-1 resistance patients
- Future directions: Exploring the potential of novel GLP-1 analogs with enhanced potency and selectivity

#### Workshop Leaders



**Andrew Young**  
Chief Scientific & Medical Officer  
**I2O Therapeutics**



**Marco Falasca**  
Professor  
**Universita Degli Studi Di Parma**

### Lunch & Networking

12.00

### Workshop B

1:00 - 4:00

#### Mechanistic Insights and Translational Implications of Biased signaling at the GLP-1 Receptor: Assessing the Therapeutic Potential of Biased Agonists

Join this workshop for a comprehensive overview of how receptor conformational changes drive ligand-specific signaling, with a focus on biased agonism. Delve into the preclinical, translational and clinical findings, exploring the potential for personalized medicine approaches based on patient-specific signaling profiles and discuss the development of biomarkers to predict treatment response.

- Assessing the role of receptor conformational changes in ligand-specific activation of signaling pathways
- Utilization of advanced techniques to elucidate structural determinants of biased signaling
- Future considerations in designing and interpreting preclinical studies to assess the therapeutic potential of biased agonists to influence the next wave of GLP-1 therapeutics
- Translation of preclinical findings to clinical trials and evaluation of clinical efficacy and safety
- Diving into the potential for tailoring GLP-1 therapies to patients based on their characteristics and signaling profiles for increased specificity
- Developing biomarkers to accurately predict response to biased agonists
- Using biased signaling insights to develop GLP-1 therapies with improved efficacy, safety, and tolerability
- Exploring novel therapeutic applications for GLP-1 receptor agonists using biased signaling pathways

#### Workshop Leaders



**Jacek Mokrosinski**  
Senior Scientist  
**Novo Nordisk**



**Iris Grossman**  
Chief Therapeutics Officer  
**Eleven Therapeutics**

### End of Workshop Day

4.00

WELCOME

EXPERT SPEAKERS

AGENDA

PARTNER WITH US

REGISTER YOUR PLACE



+1 617 455 4188 @ info@hansonwade.com

www.glp-1-based-therapeutics.com Obesity, NASH, & CVRM Drug Development





# Conference Day One

## April 30, 2025



7.00 Registration & Coffee



**Damian Bialonczyk**  
Global Medical Lead -  
Metabolism  
**Roche**

7.55 Chair's Opening Remarks

### Upcoming Breakthroughs in GLP-1s: Combinations to Improve, Efficacy, Tolerability & Patient Experience



**Karly Mather**  
Senior Scientist  
**Astra Zeneca**

8.00 **Beyond Incretins: Exploring the Quality of Weight Loss with AZD6234, a Novel Selective Amylin Receptor Agonist, and GLP-1RA Combinations in DIO Rats**

- AZD6234 is a long-acting, selective amylin receptor agonist that mediates dose-dependent decreases in food intake and body weight change in obese rats
- Switching to AZD6234 after GLP1RA prevents body weight rebound and increases weight loss when combined with GLP1RA in obese rats
- AZD6234 promotes fat mass loss while preserving lean mass without compromising tolerability in pre-clinical models



**Johan Paulsson**  
Director – Incretin &  
Amylin Biology  
**Novo Nordisk**

8.30 **Examining the Latest Advancements in GLP-1-Based Therapies: Combining GLP-1 & Amylin Analogues for Obesity & Diabetes Therapy**

- Discussing the complementary physiological actions of GLP-1 and amylin in regulating glucose homeostasis, appetite, and satiety
- Highlighting how the combination of agonists can lead to enhanced glycemic control, weight loss, and improved cardiovascular outcomes compared to monotherapies
- Explore potential challenges, such as the development of long-acting dual agonists with sustained efficacy and the need for further clinical trials to establish long-term safety and efficacy



**Jerry Colca**  
Chief Scientific Officer  
**Cirius Therapeutics**

9.00 **New Insulin Sensitizers as a Golden Combination With GLP-1 & Weight Loss Therapies**

- Discussing novel oral insulin sensitizers targeting the mitochondrial pyruvate carrier to improve insulin sensitivity by shifting mitochondrial metabolism, increasing insulin response, and enhancing mitochondrial function
- Exploring insulin sensitizers beyond glycaemic control such as their potential to increase lean muscle mass and inflammation modulation
- Developing potent insulin-sensitising drugs that can be used in combination with GLP-1 receptor agonists to meet the large unmet need in the management of individuals with type 2 diabetes



**Ansarullah, PhD**  
Associate Director -  
Metabolic Phenotyping  
Core, Centre for  
Biometric Analysis  
**The Jackson  
Laboratory**

9.30 **Preclinical Assessment of GLP-1 and Combination Therapies for Obesity: Insights from Mouse Models**

- Assessment of Mono, Dual, and Tri-Agonist GLP-1 Therapies in Diet-Induced Obese and db/db Mouse Models
- Effects of GLP-1 Agonists on Weight Reduction and Body Composition in a Polygenic Mouse Model Under Ambient and Thermoneutral Conditions
- Imaging Approaches for Body Composition Assessment in Preclinical Models: Subcutaneous Fat, Visceral Adiposity, and Lean Mass



10.00 **Speed Networking**

Put a face to a name – this session is the perfect opportunity to get face-to-face time with key opinion leaders, leading companies, and innovative researchers in the GLP-1 field. Establish meaningful connections to build upon for the rest of the conference and gain individual insight beyond the papers and press releases into the pioneering research and technique applications.



10.30 **Morning Break & Networking**

### Increasing Muscle Preservation During GLP-1 Treatment for Improved Metabolic Function

Session Chair:  **Hong Chen**, Director - Search & Evaluation, **Novo Nordisk**



**Jason Maistaitis**  
Senior Principal  
Scientist  
**Regeneron**

11.00 **Combining GLP-1s With Anti-myostatin Monoclonal Antibodies for Improved Muscle Mass Retention**

- Adding anti-myostatin to semaglutide treatments to improve quality of weight loss
- Exploring combination therapies to promote the maintenance of weight loss post GLP-1 administration
- Exploring the use of myostatin for the preservation of muscle mass during and after treatment using GLP-1s



# Conference Day One

## April 30, 2025



**Jennifer Linge**  
Chief Scientific Officer  
**AMRA Medical**

### 11.30 **MRI-based Body Composition Reimagined: Building a New Foundation for Treatment Differentiation Beyond Weight Loss**

- FDA-cleared MRI-based body composition analysis provides a new standard for muscle and fat quantification enabling translation from population studies and clinical trials all the way into healthcare
- Studies on Personalized Fat and Muscle Z-score biomarkers show improved prediction of outcomes and that weight- and BMI-invariant treatment effects can be detected
- Understanding loss of muscle mass and shifts in fat distribution in the context of weight reduction and exploring the varying effects of liraglutide and tirzepatide in recent clinical trials



**David Glass**  
Vice President - Research  
**Regeneron**

### 12.00 **Considerations for Aging Users of GLP-1s Using Sarcopenia as a Case Study**

- Discussing the potential impact of GLP-1 receptor agonists on sarcopenia in aging populations
- Exploring the complex interplay between GLP-1 signaling, muscle mass, and function
- Examining the potential for GLP-1s to contribute to muscle loss or, conversely, to have beneficial effects on muscle mass and function in older adults



**Mitchell Steiner**  
Chairman & Chief Executive Officer  
**Veru**

### 12.30 **Phase 2b QUALITY Clinical Study: Enobosarm Preserved Lean Mass and Physical Function in Older Patients Receiving Semaglutide for Weight Loss**



### 1.00 **Lunch & Networking**

## **Novel Clinical Development & Design Strategies for the Assessment of GLP-1s in Obesity Related Conditions**

Session Chair:  **Robert A. Beardsley**, President & Chief Executive Officer, **Cirius Therapeutics**



**Belle van Rosmalen**  
Director – Incretin Outcomes  
**Eli Lilly & Co.**

### 2.00 **Overcoming Complex Pathophysiology & Patient Retention in Clinical Trials for GLP-1s to Treat MASH**

- Discussing the benefits of placebo sharing strategies to overcome challenges in placebo arm requirements in clinical trials
- Outlining strategies for placebo patient retention when other GLP-1 trials are available
- Evaluating the use of real-world placebo patient databases to execute reliable time to event analysis



**Martin Schain**  
Director - PET Imaging  
**Antaros Medical**

### 2.30 **How Imaging can Elucidate Effect of Incretin Therapies - from Muscle Preservation to Neuroprotection**

- Insights from imaging: Advanced imaging methods to further understand the underlying mechanisms of incretin based pharmacological interventions
- Underneath the lost kilos: using body and muscle composition to understand the complexity of weight loss
- The future for incretin-based therapies: utilising imaging to elucidate novel combinations and expansion into new indications and disease areas

### 3.00 **Panel: Delving into Clinical Trial Design to Accurately Assess GLP-1s in Comorbidities of Obesity**



- Exploring strategies for patient selection and stratification using baseline characteristics and specific comorbidities to assess differential treatment effects
- Considering the ethical implications of placebo arms to obtain reliable clinical data whilst ensuring patients receive required care
- Drawing on real world data to ensure adequate sample size and statistical testing to detect clinically meaningful differences



**Belle van Rosmalen**  
Director – Incretin Outcomes  
**Eli Lilly & Co.**



**Scott Harris**  
Chief Medical Officer  
**Altimmune**



**Simon Bruce, MD**  
Vice President, Drug Development Solutions  
**ICON**



# Conference Day One

## April 30, 2025

### 3.30 Future of GLP1 Trials: Innovations and Perspectives

This comprehensive presentation will provide an in-depth overview of:

- Evolving trial designs
- Integrating technology in GLP1 Trials
- Future trends and implications



**Alessandra Vignola**

President - Cardiovascular & Metabolic Business Unit  
**Worldwide Clinical Trials**



**Natalia Castro**

Executive Director  
**Worldwide Clinical Trials**



### 4.00 Afternoon Refreshments & Poster Session

Immerse yourself in an engaging and informal session, join your peers in a relaxed atmosphere that encourages meaningful conversations and discussions. Explore a range of exciting poster presentations and showcase your own developments in the GLP-1 Therapeutic world. Don't miss out on the chance to submit your own posters and get ready to connect, learn, and present. To submit your poster please contact [info@hansonwade.com](mailto:info@hansonwade.com)



**Scott Harris**

Chief Medical Officer  
**Altimmune**

### 4.30 The Effects of GLP-1 Receptor Agonists on Lean Body Mass Loss & Associated Outcomes in Clinical Trials

- Navigating the rationale behind using GLP-1s to treat obesity, MASH and fatty liver disease
- Understanding the limitations of GLP-1 monotherapy and GLP-1/GIP dual agonists
- Strategies to increase the lean body mass retention of GLP-1 patients



**Adam Bell**

Vice President –  
Translational Medicine  
& Regulatory Affairs  
**Neuraly**

### 5.00 DD01 – GLP-1/Glucagon Dual Agonist for the Treatment of MASH

- Developing a once weekly dual agonist of GLP-1 and glucagon receptors
- Exploring the benefits of half-life extension in obese/overweight patients with type 2 diabetes and MAFLD
- Assessing the benefits of DD01 in its ability to augment incretin therapy, acting through the glucagon receptor and enhancing liver lipolysis to treat the liver first

## Forging Strategic Alliances Across Biotech, Pharma & Investors to Turbocharge Commercial & Scientific Breakthroughs in GLP-1 Development

Session Chair:  **Jacek Mokrosinski**, Senior Scientist, **Novo Nordisk**

### 5.30 Panel Discussion



- Hear from large pharma, investors, and experienced biotech leaders as they dive into the scientific and commercial factors of a setting up a successful partnership to develop GLP-1 based therapeutics for indications in obesity and beyond
- Uncover the key end-to-end key milestones that are evaluated when deciding on investment and partnership opportunities
- Ask your questions on what big pharma companies will be looking for next in their obesity and metabolism portfolios



**Hong Chen**

Director – Search & Evaluation  
**Novo Nordisk**



**Robert A. Beardsley**

President & Chief Executive Officer  
**Cirius Therapeutics**

### 6.00 Chairs Closing Remarks



### 6.10 Drinks Reception & Networking

### 7.00 End of Conference Day One



# Conference Day Two

## May 1, 2025



7.00 Registration & Coffee



**Zohar Barbash**  
Chief Technology  
Officer  
**Lembas Bio**

7.50 Chair's Opening Remarks

### Manufacturing Morning: Scaling up Peptide Manufacturing & Logistics for Effective Distribution of GLP-1s



8.00 Roundtable: Early Considerations for Manufacturing GLP-1s to Streamline Processes & Reduce Delays

- Ensuring the build of a resilient supply chain to minimize disruption and ensure on time delivery of GLP-1s to patients
- Discussing the importance of process optimization in reducing cost of goods and scaling up GLP-1 manufacturing processes
- Identifying and mitigating potential risks throughout the manufacturing and distribution process ahead of time to overcome challenges pre-emptively



**Taysir Bader**  
Biopharma Specialist  
**Waters Corporation**

8.30 Accelerating method Development and Manufacturing of GLP-1 Analogs with LC-UV/MS

- GLP-1 manufacturers need to meet regulatory standards while maintaining product safety and productivity
- Orthogonal mass information increases efficiency in informed decisions making in method development and reduces errors
- LC-UV/MS workflow provides critical insights on GLP-1 identification and impurities/degradants detection

### Uncovering the Next Frontier of GLP-1 Based Therapeutics: Novel Strategies for Enhanced Therapeutic Impact



**Ann Beliën, PhD**  
Founder & CEO  
**Rejuvenate Biomed**

9.00 Sarcopenia & Muscle Quality Loss Irrespective of its Underlying Cause

- Rjx-01 and its multimodal mechanism: NMJ, mitochondrial health, autophagy, inflammation, and regeneration
- Rjx-01's performance based outcomes in animal models and humans
- Rjx-01, muscle quality protector, ready for synergistic clinical development



**Caitlin Langford, Ph.D.**  
Senior Director of  
Product, Pharma  
Solutions  
**Perspectum**

9.30 Advancing GLP-1 Clinical Trials with Quantitative MRI: Multi-Organ and Body Composition Imaging for Deep Phenotyping

- **Beyond weight loss:** Using quantitative MRI to track fat distribution and body composition changes in GLP-1 clinical trials
- **Multi-organ insights:** Leveraging MRI to phenotype metabolic diseases by assessing liver, kidney, heart, and muscle health
- **Enhancing trial outcomes:** Integrating quantitative MRI with traditional biomarkers for deeper patient insights and optimized clinical trial design



**Dr Matt Wilson**  
Founder & CEO  
**uMed**

10.00 SnapACCESS: Real-Time Patient Insights for Obesity and Diabetes — At Scale and On Demand

- How SnapACCESS integrates real patient responses with clinical data
- Immediate insights for Commercial, Medical Affairs and Clin Op teams
- Rapid qualitative insights with clinical data precision and overcoming limitations of traditional research



**Jay Caplan**  
President & Founder  
**Fractyl Health**

10.10 Leveraging Gene Therapy Approaches to Promote Durable Weight Loss & Overcome Challenges in Patient Adherence

- Advancing incretin-based therapies designed to be a one-time therapy for long-term remission of type 2 diabetes
- Permanently altering metabolic hormone response in pancreatic islet cells
- Uncovering strategies to maintain body composition and glycemia after semaglutide withdrawal



10.40 Morning Refreshments

session chair: Jacek Mokrosinski, Senior Scientist, Novo Nordisk

# Conference Day Two

## May 1, 2025



**David Anderson, PhD**  
Director, Science & Innovation  
**Clinical Ink**

- 11.10 TrialReady: A Real-Time Continuous Symptom Monitoring Platform to Improve GLP-1 Study Adherence, Reduce Trial Risk Metrics, and Track Multimodal Changes in Physiological Endpoints**
- Review multidomain patterns of GLP-1 associated symptoms
  - Introduce TrialReady as the only platform to monitor GLP-1 associated symptoms in real time
  - Discuss behavioral characterization tools to improve adherence and reduce dropout



**Justin Goodarz**  
Chief Commercial Officer  
**Verified Clinical Trials**

- 11.20 Preventing Professional & Duplicate Participants from Entering GLP-1 Clinical Trials: It's Not A Matter of If there will be Duplicates. Rather, How Many...**
- Enhancing Patient Safety, Data Quality, and Study Integrity
  - Current trends we are seeing within the GLP-1 space related to duplicate & professional participants and ways to mitigate this risk.
  - Why do participants dual enroll? The "participant personas" identified by Verified Clinical Trials
  - How prevention of professional & duplicate participants (vs detection) can save time and money, reduce dropout rates, can reduce placebo response / strengthen efficacy, and make you more competitive



**Elisa Araldi**  
Professor  
**Universita Degli Studi Di Parma**

- 11.30 Examining the Genetic Risk Factors in the Efficacy of GLP-1 Agonists**
- Understanding how patient variability affects the response to GLP-1 therapeutics
  - Exploring the resistance that can be seen to slowed gastric emptying
  - Genetic effects on incretin signaling



**Zohar Barbash**  
Chief Technology Officer  
**Lembas Bio**

- 12.00 Novel Peptide Based Therapy to Increase GLP-1 levels Naturally**
- GLP-1 levels Naturally
  - AI based peptide discovery platform developed to create specific potent activating peptide based therapeutics
  - The peptides cause increase in the level of GLP1 in the same pathway used by natural intake of food
  - This approach cause release of GLP-1 to blood stream with less side effects and high satiety feeling



**Brad Swanson, PhD**  
Bioassays and Metabolic Assays for Evaluating GLP-1, GIP, and Glucagon Therapeutics  
**Promega**

- 12.30 Bioassays and Metabolic Assays for Evaluating GLP-1, GIP, and Glucagon Therapeutics**
- Measuring Drug Activity – Functional bioassays quantify potency and efficacy of GLP-1, GIP, and glucagon receptor agonists
  - Metabolic Insights – Lipid and glucose assays assess drug effects on fat storage, breakdown, and insulin sensitivity
  - Optimizing Therapeutic Development – Integrated assay strategies provide a comprehensive view of incretin-targeting drug mechanisms



- 12.40 Lunch & Networking**  
session chair: **Zohar Barbash**, Chief Technology Officer, **Lembas Bio**



**Iris Grossman**  
Chief Therapeutics Officer  
**Eleven Therapeutics**

- 1.40 xRNA-encoded GLP1 agonist: the Goldilocks solution for safe, durable and titratable therapy**
- xRNA is a synthetic, chemically decorated version of mRNA with longer duration of effect
  - We developed xGLP-1, an xRNA version to introduce GLP-1 peptides, while optimizing the sequence, chemistry and payload to boost in vivo potency and durability by several orders of magnitude
  - Two routes of administration support the opportunity for possible self-administration and various combination therapies



# Conference Day Two

## May 1, 2025

### Turbocharging GLP-1 Durability & Patient Support to Drive the Long-Term Maintenance of Weight Loss

#### 2.10 Panel Discussion: Navigating Best Practices to Promote Patient Adherence to GLP-1s for Good Quality, Durable Weight Loss



- Discussing the value of support in lifestyle choices to support the healthy and productive administration of GLP-1s – should it be compulsory to provide lifestyle management programs along with GLP-1 therapeutics
- Understanding financial barriers to adherence such as changing insurance landscape for weight loss drugs
- Highlighting the importance of education and support to ensure that GLP-1s are given to suitable patients



**Mike Fantigrassi**  
Head of Product  
**National Academy of Sports Medicine**



**Jay Caplan**  
President & Founder  
**Fractyl Health**



**David Glass**  
Vice President – Research  
**Regeneron**



**Damian Bialonczyk**  
Global Medical Lead - Metabolism  
**Roche**

### Assessing GLP-1s as a 'Do it All' Product & Future Directions Beyond Obesity & Metabolism Indications



**Adam Bell**  
Vice President  
- Translational Development & Regulatory Affairs  
**Neuraly**

#### 2.55 Advancing the Use of GLP-1s in Neurodegenerative Disease: Potential Benefits of NLY01 in Early Untreated Parkinson's Disease

#### 3.25 Chairs Closing Remarks

#### 3.30 End of Conference Day Two

Great mix of reviews and research presentations

**Wave Life Sciences**



## Expertise Partner

AMRA Medical is a health informatics and precision medicine company that is pioneering body composition analysis, providing cutting-edge solutions to advance both clinical research and patient care initiatives. AMRA's gold-standard technology delivers multiple fat and muscle biomarkers - derived simply from rapid whole-body MRI scans.

AMRA is committed to driving transformative care and simplifying vital decision-making in both research and clinical settings by offering support services via their innovative platform to help advance disease research in obesity, and beyond.

[www.amramedical.com](http://www.amramedical.com)



## Expertise Partner

Antaros Medical is pioneering imaging methods, using MRI\* and PET\*\*, to both design and deliver clinical imaging studies. Applied with our extensive experience and expertise in drug development and disease biology, our tailored solutions have helped our customers to solve complex problems to empower confident decision-making at every stage of clinical drug development, from small mechanistic studies to large scale studies. Disease areas: CV, renal & metabolic diseases and oncology.

[www.antarosmedical.com](http://www.antarosmedical.com)



## Expertise Partner

JAX® Mice, Clinical and Research Services (JMCRS) has been supporting public access to models and technologies developed at The Jackson Laboratory for over 20 years. JAX Preclinical Services delivers advanced solutions for metabolic research, offering a full range of in vivo metabolic and phenotyping services designed to support preclinical drug discovery and translational studies. Our validated mouse models facilitate the investigation of disease pathology, metabolic dysfunction, and therapeutic strategies, serving as a powerful platform for drug discovery and target validation. Leveraging advanced phenotyping capabilities and scientific expertise, JMCRS empowers researchers to drive metabolic research forward and expedite the development of innovative treatments for diabetes and obesity.

[www.jax.org](http://www.jax.org)



## Expertise Partner

Perspectum is a global medical imaging company delivering innovative solutions for clinical trials. Taking a holistic approach to obesity and metabolic diseases, the company leverages advanced multi-organ and body composition MRI imaging to provide insights into fat distribution, muscle quality, and organ health, allowing trial endpoints to move beyond weight loss alone. Backed by an extensive scanner network in over 750 locations worldwide, Perspectum has supported over 30 Phase 2b and Phase 3 trials, demonstrating proven scalability for large-scale clinical studies.

[www.perspectum.com/for-professionals/pharma-solutions](http://www.perspectum.com/for-professionals/pharma-solutions)

# GET INVOLVED



**Adam Grosz**  
Senior Partnerships Director  
Tel: +1 617 455 4188  
Email: [sponsor@hansonwade.com](mailto:sponsor@hansonwade.com)





## Expertise Partner

Worldwide Clinical Trials (Worldwide) is a leading global contract research organization (CRO) that works in partnership with biotechnology and pharmaceutical companies to create customized solutions that advance new medications, from discovery to reality. Our full-service clinical development capabilities include bioanalytical laboratory services and Phase I-IV clinical trials, as well as post-approval and real-world evidence studies – all powered by our talented and accessible team of clinicians, scientists, and researchers who bring their first-hand expertise to each clinical program.

At Worldwide, we understand that each customer and project are unique, so we take a collaborative and personalized approach to identify and meet specific needs and goals. Anchored in our company's scientific heritage, we are therapeutically focused on cardiovascular, metabolic, neuroscience, oncology, and rare diseases. We apply this deep therapeutic knowledge to develop flexible plans and quickly solve problems in the rapidly evolving clinical development landscape.

Our team of 3,000+ professionals spans 60+ countries, and believes that through collaboration, and a culture that embraces diversity, equity, inclusion, and belonging (DEI&B), everyone plays an important role in making a world of difference for patients and their caregivers. We are united in cause with our customers to improve the lives of patients through new, innovative therapies.

For more information on Worldwide, visit [www.worldwide.com](http://www.worldwide.com) or connect with us on LinkedIn.

[www.worldwide.com](http://www.worldwide.com)



## Expertise Partner

Waters Corporation

At Waters, we unlock the potential of science by solving problems that matter. Our software and instruments ensure the safety of the medicines we take, the purity of the food we eat and the water we drink, and the quality and durability of products we use every day. Together with our customers, in labs around the world, we deliver scientific insights to improve human health and well-being, helping to leave the world better than we found it.

[www.waters.com](http://www.waters.com)



## Hosting Partner

ICON plc is a world-leading healthcare intelligence and clinical research organization. From molecule to medicine, we advance clinical research providing outsourced services to pharmaceutical, biotechnology, medical device and government and public health organizations. We develop new innovations, drive emerging therapies forward and improve patient lives. With headquarters in Dublin, Ireland, ICON employed approximately 41,900 employees in 106 locations in 55 countries as at December 31, 2024.

[www.iconplc.com](http://www.iconplc.com)

# GET INVOLVED



**Adam Grosz**  
Senior Partnerships Director  
Tel: +1 617 455 4188  
Email: [sponsor@hansonwade.com](mailto:sponsor@hansonwade.com)



## Hosting Partner

The National Academy of Sports Medicine (NASM) is an organization that provides certification, education, and career development opportunities for professionals in the fitness, wellness, and sports industries. NASM has gained recognition for its evidence-based approach to fitness and wellness education and has developed a range of programs aimed at enhancing the skills of personal trainers, wellness coaches, athletic trainers, strength and conditioning coaches, physical therapists, and other health professionals.

[www.nasm.org](http://www.nasm.org)



## Innovation Partner

Clinical ink is the global life science company bringing data, technology, and patient-centric research together. Our deep therapeutic-area expertise, coupled with behavioral science, eDC/Direct Data Capture, eCOA, eConsent, telehealth, and digital biomarkers advancement (including the use of Continuous Glucose Monitoring for detection of hypoglycemia), support the next generation of clinical trials and ultimately, the clinical management of patients.

[www.clinicalink.com](http://www.clinicalink.com)



## Innovation Partner

Promega is committed to excellence in technologies and compound profiling services to assess key processes in Targeted Protein Degradation and Induced Proximity mechanisms. From assessing protein degradation in real time, to understanding compound binding and permeability, to ternary complex formation and more. Our CRISPR HiBiT content covers hundreds of pre-built targets. Novel software analysis tools allow for the determination of target protein degradation rates, DC50 potency values, recovery profiles and more.

[www.promega.co.uk](http://www.promega.co.uk)



## Innovation Partner

“Professional” & duplicate research participants have been doing the clinical research industry a disservice for far too long.

GLP-1 studies pose a unique risk due to the size of trials, number of competing trials looking for the same participant profile with similar inclusion/exclusion criteria, and new sponsors entering the space.

Verified Clinical Trials can prevent (vs detect) cross-sponsor, cross-therapeutic area, and cross-phase dual enrollment, at screening, in an effort to enhance patient safety, data quality, study integrity, and will ultimately save time & money as dually enrolled participants will not need to be dropped and re-recruited.

At screening, VCT determines participant eligibility by comparing the protocol's inclusion and exclusion criteria to the research participant's current and past research history. Without Verified Clinical Trials, this is a gap in the screening process.

Let's collaborate to ensure clinical trials are enrolling the most qualified participants possible!

[verifiedclinicaltrials.com](http://verifiedclinicaltrials.com)



**Adam Grosz**  
Senior Partnerships Director  
Tel: +1 617 455 4188  
Email: [sponsor@hansonwade.com](mailto:sponsor@hansonwade.com)

# GET INVOLVED





## Innovation Partner

uMed enables life sciences to rapidly access real-world insights through our SnapACCESS platform —our turnkey solution for fast, scalable evidence generation. This includes over 5,000 IRB-consented patients with obesity and diabetes (which is rapidly increasing), with EMR- and PRO-linked data. The platform supports rapid delivery of custom qualitative insights, with study outputs available in under 4 weeks—ideal for supporting GLP-1 research and decision-making.

[www.umed.io](http://www.umed.io)



## Event Partner

AnaSpec is a U.S. manufacturer of Peptides and Peptidomimetics, with over 30 years of expertise in complex to simple peptides and peptide libraries. Globally recognized for quality and product excellence, we serve the biopharmaceutical industry, diagnostic companies, agro-food firms, academia, and governmental institutions. Our custom manufacturing capabilities cover every stage of the product lifecycle—from R&D through GMP-grade production for clinical applications. GLP-1 off-the-shelf research-use peptides are also available from our large catalog portfolio.

[www.anaspec.com](http://www.anaspec.com)



## Event Partner

Cardiomedex is a preclinical CRO, highly specialized in cardiovascular and cardiometabolic diseases in collaboration with its affiliates company Physiogenex, specialized in metabolic diseases (obesity/type 2 diabetes & comorbidities).

Cardiomedex provides reliable preclinical studies using integrative predictive models of HFpEF, HFrEF, cardiac hypertrophy & fibrosis, myocardial infarction, cardiomyopathy (takotsubo, genetic...), cardiometabolic diseases, hypertension, cardiotoxicity, etc. and new tailor-made models to fulfil our partners' needs.

Cardiomedex offers ex-vivo (vascular reactivity/isolated heart/cardiomyocytes/mitochondrial function) and in-vivo exploration (echocardiography/telemetry/PV loops/ECG/treadmill/tail cuff) to provide in-depth functional characterization.

[www.cardiomedex.com](http://www.cardiomedex.com)



## Event Partner

NBCD (Nordic Bioscience Clinical Development) is a global full-service CRO specialized in musculoskeletal disorders and obesity. NBCD was established in 2006 and offers scientific and clinical trial services within musculoskeletal disorders and obesity to the biotech and pharmaceutical industry.

A positive cash flow allows us to invest in-kind support and share the risk and thus the incentive for drug development with our partners.

As a science-driven organization, we engage in all phases of drug development; scientifically, operationally, and financially. Each year, we publish several articles in well-respected peer-reviewed journals.

[www.nbcd.com/expertise/our-approach](http://www.nbcd.com/expertise/our-approach)

## GET INVOLVED



**Adam Grosz**  
Senior Partnerships Director  
Tel: +1 617 455 4188  
Email: [sponsor@hansonwade.com](mailto:sponsor@hansonwade.com)



# Partner With Us

2nd Annual  
GLP-1-Based  
Therapeutics Summit  
April 29 – May 1 | Boston, MA

WELCOME

EXPERT SPEAKERS

AGENDA

PARTNER WITH US

REGISTER YOUR PLACE

## Your Unique Opportunity to Nurture New & Existing Relationships in the Rapidly Expanding GLP-1 Space

The **2nd GLP-1-Based Therapeutics Summit** will unite leading experts to strategize the next steps in this rapidly growing field, bringing the best therapeutics for diabetes, obesity, MASH and the many other indications GLP-1s have the potential to treat. This focused meeting presents an unparalleled opportunity for mnetworkign and fostering collaborations with this expert community that is the driving force behind the success of GLP-2 therapeutics. Join this summit to position yourself as a trusted partner and thought leader in front of the decision makers in this exploding landscape.



### Why Partner?

Develop strategic relationships with industry experts and work closely with us to craft a bespoke partnership package to help you exceed your 2025 commercial goals.



### Who will you meet?

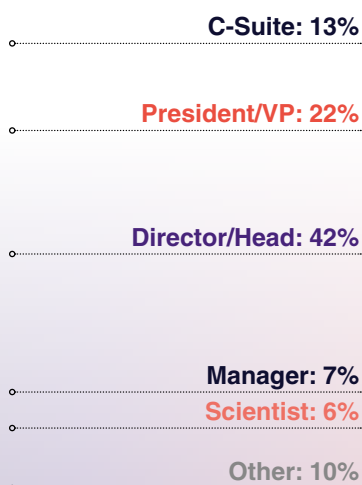
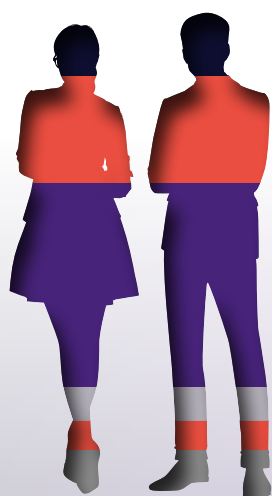
Seize this unique opportunity to connect with decision-makers and innovators developing GLP-1 therapies, actively seeking partners to facilitate the development of their groundbreaking treatments.



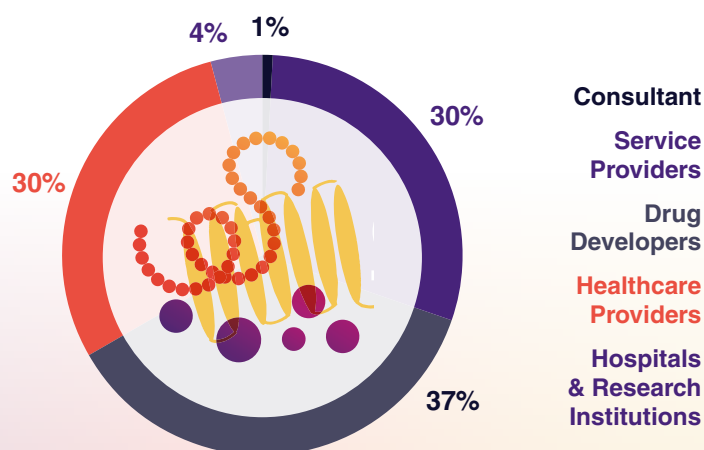
### Why Showcase?

Elevate your brand awareness by highlighting your valuable expertise to influential pharma and biotech leaders. Stand out from competitors and position yourself as a trusted innovator and partner in the field.

## SENIORITY OF ATTENDEES\*



## TYPES OF COMPANIES ATTENDING\*



\*Statistics taken from GLP-1-Based Therapeutics Summit 2024

## GET INVOLVED



**Adam Grosz**  
Senior Partnerships Director  
Tel: +1 617 455 4188  
Email: [sponsor@hansonwade.com](mailto:sponsor@hansonwade.com)



# Ready to Register?

## 3 Easy Ways to Book

-  [www.glp-1-based-therapeutics.com/take-part/register](http://www.glp-1-based-therapeutics.com/take-part/register)
-  Tel: +1 617 455 4188
-  Email: [info@hansonwade.com](mailto:info@hansonwade.com)



**DISCOVER** how leading companies are harnessing GLP-1 combinations to develop the next generation of GLP-1-Based Therapeutics



**BUILD** your understanding into the current challenges, strategies and solutions to drive indication expansion of GLP-1s beyond obesity and diabetes



**ENGAGE** with your community and peers from leading pharma and biotech companies to build lasting connections, complementary collaborations to drive GLP-1 development

Drug Developer Pricing	Standard Rate	On the Door Price
Conference + 2 Workshops	\$4,097 ( <b>Save \$100</b> )	\$4,197
Conference + 1 Workshop	\$3,498 ( <b>Save \$100</b> )	\$3,598
Conference Only	\$2,899 ( <b>Save \$100</b> )	\$2,999

Academic Pricing	Standard Rate	On the Door Price
Conference + 2 Workshops	\$3,497 ( <b>Save \$100</b> )	\$3,597
Conference + 1 Workshop	\$2,998 ( <b>Save \$100</b> )	\$3,098
Conference Only	\$2,499 ( <b>Save \$100</b> )	\$2,599

Solution Provider Pricing	Standard Rate	On the Door Price
Conference + 2 Workshops	\$4,997 ( <b>Save \$100</b> )	\$5,097
Conference + 1 Workshop	\$4,298 ( <b>Save \$100</b> )	\$4,398
Conference Only	\$3,599 ( <b>Save \$100</b> )	\$3,699

\*To qualify for the drug developer rate your company must have a public drug pipeline. Please visit the website for full pricing options or email [info@hansonwade.com](mailto:info@hansonwade.com)  
Do you work for a Not-for-Profit organization? Email us at [info@hansonwade.com](mailto:info@hansonwade.com) to inquire about attending

\*\*To qualify for academic & research rate you must be full time academic. Please visit the website for full pricing options or email [info@hansonwade.com](mailto:info@hansonwade.com)

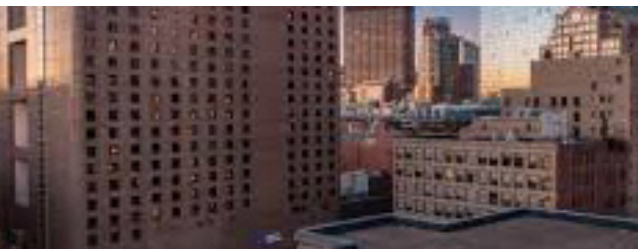
## Team Discounts\*\*

- 10% discount – 2 Attendees
- 15% discount – 3 Attendees
- 20% discount – 4 + Attendees

\*\*\*Please note that discounts are only valid when three or more delegates from one company book and pay at the same time.

Discounts cannot be used in conjunction with any other offer or discount. Only one discount offer may be applied to the current pricing rate.

Contact: [register@hansonwade.com](mailto:register@hansonwade.com)



## Venue

**Wyndham Boston Beacon Hill**  
5 Blossom St, Boston, MA 02114  
[www.wyndhambeaconhill.com](http://www.wyndhambeaconhill.com)

### TERMS & CONDITIONS

Full payment is due on registration. Cancellation and Substitution Policy: Cancellations must be received in writing. If the cancellation is received more than 14 days before the conference attendees will receive a full credit to a future conference. Cancellations received 14 days or less (including the fourteenth day) prior to the conference will be liable for the full fee. A substitution from the same organization can be made at any time.

Changes to Conference & Agenda: Every reasonable effort will be made to adhere to the event programme as advertised. However, it may be necessary to alter the advertised content, speakers, date, timing, format and/or location of the event. We reserve the right to amend or cancel any event at any time. Hanson Wade is not responsible for any loss or damage or costs incurred as a result of substitution, alteration, postponement or cancellation of an event for any reason and including causes beyond its control including without limitation, acts of God, natural disasters, sabotage, accident, trade or industrial disputes, terrorism or hostilities.

Data Protection: The personal information shown and/or provided by you will be held in a database. It may be used to keep you up to date with developments in your industry. Sometimes your details may be obtained or made available to third parties for marketing purposes. If you do not wish your details to be used for this purpose, please write to: Hanson Wade Ltd, Eastcastle House, 27/28 Eastcastle Street, London, W1W 8DH, United Kingdom



# Market Access for Obesity & CVRM Therapeutics Summit

Assess & Commercialize Cardiovascular, Renal, & Metabolic Therapeutics

July 16-17, 2025  
Boston, MA

WELCOME

EXPERT SPEAKERS

AGENDA

PARTNER WITH US

REGISTER YOUR PLACE

In a recent report, the Institute for Clinical and Economic Review (ICER) addressed the cost of the rise in GLP-1 usage for the federal government, with Medicare Part D spending going from \$57 million in 2018 to \$5.7 billion in 2022, highlighting the increased coverage of GLP-1s in state and federal health plans. However, with 6 new GLP-1s expected to launch in the next two years from pharmaceutical giants such as **Lilly**, **Novo Nordisk**, **Boehringer Ingelheim** and **Amgen**, this spend is set to increase once again. Despite increased scientific understanding and the potential for more transformative therapies, significant barriers, surrounding pricing models, reimbursement systems and health policies are hindering patient access to therapies that could transform healthcare as we know it.

Navigating the complex and everchanging landscape, coupled with an enormous patient population, market access for anti-obesity medications and their comorbidity counterparts presents formidable challenges. In a time of uncertainty around government policies and an unrecognizable healthcare landscape, the **Market Access for Obesity & CVRM Therapeutics Summit** will unite biopharmaceutical players, Payers, government organizations, and consultants all under one roof to assess strategies to establish new therapies in the market, leaving you with tangible insights to take back to your team.

Join your market access, pricing, reimbursement, and government affairs colleagues to enjoy candid discussions and thought provoking, data-driven insights, leaving you with actionable learnings to bring back to your team. Align with like-minded experts on the current market access challenges and policy changes that are preventing widespread adoption and potential new market entrants in the obesity and cardiometabolic field.

## You can expect conversations surrounding:

- Ensuring access and managing costs of therapies to align with the evolving clinical and payer guidelines and patient expectations
- Identifying appropriate patients and ensuring therapeutics are available to the patient population
- Deep-diving into recent health policy updates at a state and national level such as the **Inflation Reduction Act** and **Treat & Reduce Obesity Act**, to help you stay ahead of the curve and reduce bottlenecks when launching new obesity & CVRM therapeutics to the market
- Planning for future market entrance in the evolving market to establish a new market entrance in a saturated field and more...

## What our speakers have to say:

“The obesity and CVRM therapeutic landscape is constantly evolving. It is paramount to take a deeper dive into the obesity and CVRM access, coverage, and reimbursement environment to better understand future impact. I look forward to speaking and contributing at the Market Access for Obesity & CVRM Summit and engaging in meaningful discussions that impact one of the largest patient populations in the United States.”

**Charles (Chuck) Collins, MS, MBA, President, Healthcare Stakeholder Solutions, LLC**

“I am looking forward to sharing our research on obesity treatment coverage and the development of our comprehensive obesity benefit with the attendees of the Summit.”

**Cristy Gallagher, Associate Director of Research & Policy, The STOP Obesity Alliance**

## Why Attend?



### Empower Your Team in Market Access Excellence:

Gain practical insights for launching products with a dual brand strategy for reimbursement optimization, patient population segmentation and strategic tailored messaging with **Eli Lilly & Co.**



### Evaluate Effective Payment Models:

Dive into the intricacies of different payment models to understand how they effect affordability, likelihood of reimbursement, value-based and cost-containment for new-market entrants in the obesity field with **Binghamton University**



### Advance Reimbursement Strategies:

Understand how reimbursement models are the key drivers in improving affordability, adherence, budget predictions and ultimately, improved clinical outcomes for patients with **America's Health Insurance Plans (AHIP)**



### Assess Value & Generate Evidence:

With assessing value and generating evidence arguably the most important aspects of market access, our RWE and HEOR strategy sessions will dive into increasing payer confidence, formulary inclusion strategies and smooth pricing negotiations with **Boehringer Ingelheim**



### Stay Up to Speed on Policy Updates:

At this turbulent time, policies in the US healthcare system, specifically with obesity medications, are hard to keep up with. Join our dedicated health policy sessions for deep-dives into the IRA and TROA to gain a better understanding of potential access bottlenecks and how to deal with them with **PhRMA**





3rd Annual

# Obesity & Weight Loss Drug Development Summit

Advancing Best-In-Class Weight Loss Therapies in the Evolving Obesity Landscape

July 14-16, 2025  
Boston, MA

WELCOME

EXPERT SPEAKERS

AGENDA

PARTNER WITH US

REGISTER YOUR PLACE

The obesity therapeutic landscape is ablaze with innovation and excitement ignited by the GLP-1 agonists (but you know that already...!), 2024 has been one for the books with **Amgen's** MariTide study, **Novo's** combination therapies, and **Lilly's** late-stage triple agonist therapy, **Pfizer's** once-daily weight loss pill and more – what could be instore for 2025?

Without a doubt there's a lot of excitement in the clinic, but what's to come? The **3rd Obesity & Weight Loss Drug Development Summit** will be the epicentre of this revolution, bringing together **70+ industry leaders**, **big pharma** and **innovative biotech** to combat the challenges to create more efficacious drugs and explore the future commercial opportunity of obesity drugs in this dynamic market.

Join us at this unique, industry-led summit to:

- Discover groundbreaking **combination therapies** and **novel targets** to minimize and manage side effects to improve patient **tolerability** with **Boehringer Ingelheim** and **Altimune**
- Explore innovative approaches for **preserving muscle mass** whilst still achieving significant weight loss to prevent sarcopenia with **Regeneron** and **iBio**
- Investigate cutting-edge advancements in drug delivery technologies, including long-acting formulations and novel **administration routes** for simpler patient use with **Biolexis** and **Syntis Bio**
- Learn strategies to drive long-term weight management success by **personalizing treatment** for more prolonged patient continuation and satisfaction with **Prive Bio** and **Fractyl Therapeutics**

From discovery, to preclinical, to early clinical development, this is your opportunity to come together as a drug development community in the dedicated forum for **Obesity & Weight Loss Drug Development** and be part of the conversation to benchmark your team's work against the competition and be part of the movement to shape the future of obesity treatments. Drive best-in-class weight loss therapies in the evolving obesity landscape.

## What Our Speakers Have to Say:

“Good location, very diverse and engaged audience, high quality of talks and very enthusiastic moderation of the conference by the chair”

Senior Scientist, Novo Nordisk

“This Summit will give me the chance to discuss science and drug discovery with big players in the field of obesity. It is also a big networking opportunity”

Lab Head, Boehringer Ingelheim

## Don't Miss Out On:



**New For 2025: 15+ new companies, 18+ new speakers** alongside **Eli Lilly**, **Novo Nordisk** and **Boehringer Ingelheim** who are set to return with **updates** on their development of weight loss drugs with a focus on **redefining the obesity landscape**, **novel combinations** and **targets** as well as **managing side effects**



### Innovative Combination Therapies & Targets:

Discover the latest strategies and mechanisms being investigated for the development of weight loss drugs with improved tolerability for better treatment continuation and patient experience with **Boehringer Ingelheim** and **Fractyl Therapeutics**



### Novel Administration Routes & Modalities:

Explore the alternative drug delivery systems being developed, such as oral drugs and longer-acting antibody formulations to address the complex challenges of treatment personalisation for patients with **RenBio** and **Biolexis**



### Muscle Preservation:

Investigate the most up-to-date approaches for reducing the effects of one of the biggest challenges faced in obesity treatment to ensure successful and safe weight loss by the maintenance of lean muscle mass with **Regeneron** and **iBio**