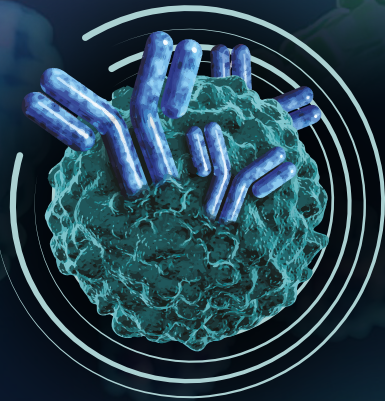


March 25-27, 2025 | Boston, MA  
www.treg-directed-therapies.com

SAVE \$500 BY  
REGISTERING BEFORE  
WEDNESDAY,  
FEBRUARY 5



7th Annual  
**Treg-Directed  
Therapies Summit**

Driving Next-Gen Treg Stimulation for Autoimmunity, Transplantation & Inflammation

**Unraveling Treg Biology, Pioneering  
Best-in-Class Approaches &  
Demonstrating Clinical Efficacy to  
Advance Validated Therapeutic Options  
in Autoimmunity, Inflammation & Beyond**

**Expert Speakers Include:**



**Paul Peloso**  
Chief Medical Officer  
COUR  
Pharmaceuticals



**Natasha Girgis**  
Director, Translational  
Pharmacology  
Cue BioPharma



**Talal Chatlia**  
Professor of  
Pediatrics  
Harvard Medical  
School



**Birgit Schultes**  
Chief Scientific  
Officer  
Intellia Therapeutics



**Pere Santamaria**  
Chief Scientific  
Officer  
Parvus Therapeutics



**Marc Martinez-  
Llordella**  
Co-Founder & Vice  
President  
Quell Therapeutics

Proud to Partner With:



**HARVARD**  
MEDICAL SCHOOL



**Beacon**  
by hansonwade

+1 617 455 4188 @ info@hansonwade.com

www.treg-directed-therapies.com Treg in Autoimmunity



WELCOME

EXPERT SPEAKERS

AGENDA

PARTNER WITH US

REGISTER YOUR PLACE

# Welcome to the 7th Treg-Directed Therapies Summit

## What Our Speakers Have to Say:

“As someone deeply passionate about Tregs and Treg-targeted therapies, I’m thrilled to attend and chair the 7th Treg-Directed Therapies Summit, where we’ll explore the cutting-edge advances in immune modulation. I look forward to hearing great talks, exchanging ideas with fellow experts, and pushing the boundaries of what’s possible in this rapidly evolving field!”

**Fabien Depis**, Independent Expert, 2025 Speaker

“Looking forward to focused insight into the direction of Treg therapies”

**Payam Zarin**, Associate Director & Research Lead, Discovery Research, GentiBio, 2025 Speaker

This year has witnessed a notable increase in investment in Treg-directed therapies, exemplified by high-profile collaborations such as those between **Parvus Therapeutics** and **AbbVie**, and **Abata Therapeutics** and **Bristol Myers Squibb**. This growing enthusiasm for immune re-balancing strategies reflects the field’s optimism about forthcoming clinical data, which is pivotal for proving the efficacy of these therapies and addressing the significant unmet needs of patients with autoimmune diseases and inflammatory disorders.

The **7th Treg-Directed Therapies Summit** continues to be the premier forum dedicated to spotlighting groundbreaking advancements in Treg cell therapies and Treg modulators, to drive therapies from proof of concept to clinical application.

Join top academics and industry pioneers including **Quell Therapeutics**, **PoiTreg**, **Nektar Therapeutics** and **EVOQ Therapeutics** as they share their insights into better understanding Treg biology, optimizing target specificity and selecting disease indications to drive clinical development forward.

Featuring **two specialized tracks** – one focused on **Treg Cell Therapies** and the other on **Treg Modulators** – the summit offers a unique opportunity to gain knowledge from the latest engineering innovations and clinical advancements. Whether you are working on a CAR-Treg product or nanomedicine-based approach, this event will provide you with the essential tools and insights needed to develop safer and more effective Treg-directed therapies.

## KEY BENEFITS OF ATTENDING



### Uncover Treg Biology:

**Diane Mathis Lab, Harvard Medical School** and **University of Cambridge** are leading the charge in preclinical research. Join them at our Treg Biology Focus Day to clarify Treg function and behaviour, and hear their groundbreaking new data



### Groundbreaking Clinical Data:

Take key learnings from new clinical data to streamline your clinical process and successfully build the future of Treg-directed therapies with **Parvus** and **Thytech**, in addition to long term clinical data from **PoiTreg**



### Improve Translational Strategy:

Learn how to effectively harness preclinical models and hear firsthand experiences of navigating the regulatory process from **GentiBio**, **Tr1x Bio** and **Tract Therapeutics**



### Streamline Manufacturing Processes & Elevate Treatment Design:

Explore strategies to enhance cell therapy scalability and produce safe therapy doses from **Tr1x Bio** and **Design Bidirectional Agonists** to modulate disease with **Seismic Therapeutics**



### Collaborate with Pharma:

Engage with leading pharmaceutical companies on what they look for in a partnership and how to build and execute successful collaborations with **Johnson & Johnson**

# Your Expert Speakers

7th Annual  
**Treg-Directed  
Therapies Summit**  
March 25-27, 2025 | Boston, MA

WELCOME

EXPERT SPEAKERS

AGENDA

PARTNER WITH US

REGISTER YOUR PLACE



**Kristie Grebe**  
Chief Scientific Officer  
**Anokion**



**Zengli Guo**  
Associate Director, Cell  
Therapeutics  
**AstraZeneca**



**Hong Jiang**  
Founder & Chief Scientific  
Officer  
**Avotres**



**Rachel Hourigan**  
Lead Research Analyst  
**Beacon**



**Paul Peloso**  
Chief Medical Officer  
**COUR Pharmaceuticals**



**Natasha Girgis**  
Director, Translational  
Pharmacology  
**Cue Biopharma**



**Haining Huang**  
President & Co-Founder  
**Cytime Therapeutics**



**Weston Daniel, PhD**  
Chief Development Officer  
**EVOQ Therapeutics**



**Payam Zarin**  
Associate Director,  
Discovery Research  
**GentiBio**



**Khaled Ali**  
Director, Immunology  
Research  
**GSK**



**Denise Faustman**  
Director, Immunobiology  
**Harvard Medical School**



**Miguel Marin-Rodero**  
Cristophe  
Benoist-Diane Mathis  
Laboratory  
**Harvard Medical School**



**Talal Chatlia**  
Professor of Pediatrics  
**Harvard Medical School**



**Louis-Marie Charbonnier**  
Assistant Professor of  
Pediatrics  
**Harvard University**



**Fabien Depis**  
**Independent Expert**



**Birgit Schultes**  
Chief Scientific Officer  
**Intellia Therapeutics**



**Stefanie Koristka**  
Principal Scientist, Cell  
Therapy  
**Intellia Therapeutics**



**Julie Di Paolo**  
Senior Director  
Immunology, Scientific  
Innovation Lead  
**Johnson & Johnson**



**Miguel Forte**  
Chief Executive Officer  
**Kiji Therapeutics**



**Tony Ting**  
Chief Scientific Officer  
**Kiji Therapeutics**



**Saul Kivimae**  
Vice President, Head of  
Pharmacology  
**Nektar Therapeutics**



**Wanjun Chen**  
Senior Investigator  
**NIH**



**James Mathew**  
Professor  
**Northwestern University**



**Pere Santamaria**  
Chief Scientific Officer  
**Parvus Therapeutics**



+1 617 455 4188 @ info@hansonwade.com

www.treg-directed-therapies.com Treg in Autoimmunity



# Your Expert Speakers

7th Annual  
**Treg-Directed  
Therapies Summit**  
March 25-27, 2025 | Boston, MA



**Dan Shelly**  
Chief Business  
Development Officer  
**PoITreg**



**Marc Martinez-Llordella**  
Co-founder & Vice  
President  
**Quell Therapeutics**



**Daniela Cipolletta**  
Senior Director,  
Immunology  
**Seismic Therapeutic**



**Charles Sentman**  
Professor, Department of  
Microbiology & Immunology  
**The Geisel School of  
Medicine at Dartmouth**  
Scientific Founder, **Celdara  
Medical**



**Rafael Correra**  
Chief Scientific Officer  
**ThyTech**



**James Adams**  
Chief Technology Officer  
**Tr1x Bio**



**Joseph Leventhal**  
Scientific Founder  
**Tract Therapeutics**



**Adel Nada**  
Co-Founder & Executive  
Chairman  
**Trutina Pharma**



**James Dooley**  
Principal Research  
Associate, Liston-Dooley  
Laboratory  
**University of Cambridge**

“Excited to see new advances in the field of Treg targeted therapies.”

**Saul Kivimae**, Vice President, Head of Pharmacology,  
**Nektar Therapeutics, 2025 Speaker**

WELCOME

EXPERT SPEAKERS

AGENDA

PARTNER WITH US

REGISTER YOUR PLACE

# Treg Biology Focus Day

## Tuesday, March 25

7th Annual  
**Treg-Directed  
Therapies Summit**  
March 25-27, 2025 | Boston, MA

Experience a full day dedicated to the latest breakthroughs and NEW DATA on Treg biology, exploring the intricate mechanisms of Treg generation, their crucial role in modulating and reversing inflammation, and their newly uncovered functions in the brain. Whether you're new to the field or an established expert, this focus day will equip you with insights from cutting-edge academic and industry advancements, ensuring you stay at the forefront of Treg discoveries.

### Advancing Novel Treg-Directed Therapeutic Options



8.00 **Check-In & Coffee**



**Miguel Forte**  
Chief Executive Officer  
**Kiji Therapeutics**

8.55 **Chair's Opening Remarks**

### Exploring Treg Biology to Better Understand Mechanisms of Action



**Talal Chatlia**  
Professor of Pediatrics  
**Harvard Medical  
School**

9.00 **Clarifying Treg Function & Behavior to Enhance Therapeutic Development**

- Exploring the mechanisms involved in Treg generation
- Examining the role of Tregs in controlling and reversing the inflammatory response to identify new therapeutic opportunities
- Analyzing Treg behavior in different tissues to improve therapeutic efficacy in a variety of disease indications



**Dr Hong Jiang**  
Founder & Chief  
Scientific Officer  
**Avotres**

NEW  
DATA

9.30 **Analyzing the Q/E CD8+ Treg Pathway to Unlock Effective Clinical Applications**

- Unravelling the unique mechanisms of the Q/E CD8+ Treg pathway
- Detailing preclinical studies in animals and non-clinical *ex vivo* studies in humans
- Analyzing safety and efficacy in newly completed phase I/II clinical trials in T1D
- Exploring platforms of drug production and precision assay systems production platforms to ensure precision assay systems



10.00 **Morning Break & Networking**

### Examining the Top Challenges in Early-Stage Treg Discovery & Drug Development



**Miguel Forte**  
Chief Executive Officer  
**Kiji Therapeutics**

11.00 **Roundtable Discussion: Exploring Strategies for Treg Tracking & Persistence Analysis**

- Discussing tracking techniques to aid in identifying Treg migration and longevity
- Identifying opportunities for strategic optimization
- Identifying effective Treg persistence and functionality biomarkers to enhance persistence analysis



**Miguel Forte**  
Chief Executive Officer  
**Kiji Therapeutics**

11.45 **Roundtable Discussion: Reflecting Upon Key Obstacles in Preclinical Treg Research & Discovery**

- Exploring difficulties in effectively utilizing preclinical models in research
- Addressing phenotypic uncertainties when identifying and characterizing Tregs to enhance accurate identification
- Understanding Treg Plasticity between regulatory and inflammatory phenotypes to prevent the change of Tregs to T effector cells
- Considering the specificity and selectivity limitations of Tregs therapies



12.30 **Lunch Break & Networking**

5

+1 617 455 4188 @ info@hansonwade.com

www.treg-directed-therapies.com Treg in Autoimmunity

hansonwade

WELCOME

EXPERT SPEAKERS

AGENDA

PARTNER WITH US

REGISTER YOUR PLACE

# Treg Biology Focus Day

## Tuesday, March 25

7th Annual  
**Treg-Directed  
Therapies Summit**  
March 25-27, 2025 | Boston, MA

WELCOME

EXPERT SPEAKERS

AGENDA

PARTNER WITH US

REGISTER YOUR PLACE

### Highlighting New Ground-Breaking Data Exploring Tregs in the Brain



**Miguel Marin-Rodero**  
Immunology PhD  
Candidate, Cristophe  
Benoist-Diane Mathis  
Laboratory  
**Harvard Medical  
School**

NEW  
DATA

#### 1.30 Unveiling Innovative Preclinical Meningeal Treg Research to Supercharge Therapeutic Development

- Exploring the Treg population in the meninges in mouse and humans
- Navigating Treg tolerogenic mechanism in the meninges
- Discussing Treg/INF- $\gamma$  regulation (inflammation)
- Evaluating Treg/B-cells and plasma cell control
- Discovering how meningeal Tregs change in neurodegenerative diseases (AD) in mouse and human



**James Dooley**  
Principal Research  
Associate, Liston-  
Dooley Laboratory  
**University of  
Cambridge**

NEW  
DATA

#### 2.00 Utilizing Tissue-Specific Delivery of IL2 to Expand local Regulatory T-Cells

- Leveraging tissue-specific IL2 delivery to expand local regulatory T-cells and reduce neuroinflammation, improving targeted therapeutic impact
- Optimizing gene delivery methods for precise treatment of brain conditions, enhancing the safety and efficacy profile of therapies
- Demonstrating proof of concept with preclinical models of neuroinflammation

#### 2.30 End of Treg Biology Focus Day

“ I am excited to be hearing about progress and discuss challenges in developing regulatory T cell-based therapies for prevention of transplant rejection and treatment of autoimmune and inflammatory conditions ”

**Joseph Leventhal, Scientific Founder, Tract Therapeutics,  
2025 Speaker**

6

+1 617 455 4188 @ info@hansonwade.com

www.treg-directed-therapies.com Treg in Autoimmunity

  
hansonwade

# Conference Day One

## Wednesday, March 26



7.30 Check-In & Coffee



**Fabien Depis**  
Independent Expert

8.20 Chair's Opening Remarks

### Evaluating Treg Cell Therapy & Treg Modulator Therapies to Uncover the Next Phase of Therapeutic Evolution

#### 8.30 Industry Leader's Fireside Chat: Comparing Treg Cell Therapies & Treg Modulators as Effective Treatments for Inflammatory & Autoimmune Diseases

- Exploring the effectiveness of treatment personalization to direct the future of Treg therapies
- Discussing technological challenges in Treg cell therapy or Treg modulator development
- Comparing Treg cell therapy and modulator treatment efficacy to identify enhancements to progress Treg therapies



**Moderator**  
**Fabien Depis**  
Independent Expert



**Saul Kivimae**  
Vice President, Head of  
Pharmacology  
**Nektar Therapeutics**



**Marc Martinez-Llordella**  
Co-founder & Vice President  
**Quell Therapeutics**



**Rafael Corraera**  
Chief Scientific Officer  
**ThyTech**

NEW  
DATA

#### 9.30 Keynote Presentation: Alternative Treg Sources: Inducing Immune Tolerance with thyTregs™: A Highly Pure & Stable Treg Population Derived from Thymic Tissue

- Unveiling thyTregs™ as a best-in-class allogeneic Treg therapy platform
- Reviewing thyTreg™ allogeneic product scale-up
- Showcasing the clinical development of a thyTreg™ candidate for tolerance induction and autoimmunities



**Denise Faustman**  
Director,  
Immunobiology  
**Harvard Medical School**

#### 10.00 TNFR2 Agonism for Treg Expansion: Why Has the TNF Superfamily Agonism in the Clinic Been So Difficult to Achieve?

- Exploring why agonism to TNF superfamily receptors has been historically difficult to achieve
- Highlighting new structural biology work, suggesting the ADCC mechanism of antibody agonism may not optimize in vivo clinical effects
- Discovering new structural biology data on hexagonal networks stabilized by antibodies, providing a potential new mechanism for improved clinical outcomes



#### 10.30 Morning Break & Speed Networking

As this community reunites for the seventh time, this session will provide valuable networking time with your peers, enabling you to forge new and lasting connections.

### Treg Cell Therapy

### Treg Modulators

#### Conquering the Transition to the Clinic: Understanding the IND Process & Regulatory Requirements

#### Reimagining Treg Modulation: Exploring Alternatives to IL-2

##### 11.30 Exploring the Treg Cell Therapy Landscape to Identify Key Trends when Transitioning to the Clinic

- Reviewing the current Treg cell therapy landscape for autoimmune diseases
- Highlighting the key therapy types transitioning to the clinic
- Identifying industry next steps to cultivate, efficient, safe cell therapy development

**Rachel Hourigan**, Lead Research Analyst, **Beacon**

##### 11.30 Assessing Novel Therapeutically Active Anti-TNFR2 Agonistic Antibodies in Promoting Treg Proliferation and the Induction of Treg Functional Markers

- Illuminating the unique properties of TNFR2 agonism for Treg targeted therapies
- Optimizing TNFR2 targeting on Tregs with novel approaches
- Showcasing preclinical data from Nektar's differentiated TNFR2 agonist

**Saul Kivimae**, Vice President, Head of Pharmacology,  
**Nektar Therapeutics**

NEW  
DATA

# Conference Day One

## Wednesday, March 26

### 12.00 Panel Discussion: Navigating Regulatory Interactions to Streamline the Approval Process

- Discuss unique company experiences to provide insight into best practices
- Evaluating regulatory setbacks in the drug development process to accelerate successful regulatory approval
- Defining regulatory requirements to optimize treatment development

**Moderator: Dan Shelly**, Chief Business Development Officer, **PoITreg**

**James Adams**, Chief Technology Officer, **Tr1x Bio**

**Joseph Leventhal**, Scientific Founder, **Tract Therapeutics**

**Adel Nada**, Co-Founder & Executive Chairman, **Trutina Pharma**

### 12.00 Roundtable Discussion: Discussing Alternative Functions of Tregs to Unearth New Perspectives of Disease Treatment

- Exploring the non-immunosuppressive functions of Tregs to accelerate treatment development for inflammatory diseases
- Analyzing mechanistic insights of Treg modulators to evaluate their effectiveness in combating inflammation
- Discussing the use of anti-inflammatory antibodies in combating diseases such as IBD

**Haining Huang**, President & Co-Founder, **Cytimm Therapeutics**

**Wanjun Chen**, Senior Investigator, **NIH**



### 12.30 Lunch Break & Networking

## Understanding Allogeneic Cell Therapy Biology & Comparing Allogeneic & Autologous Therapies

### 1.30 Unearthing Allogeneic Interactions to Understand their Function *In Vivo*

- Investigating the functional characteristics of allogeneic Tregs to ascertain where they are most effective
- Discovering allogeneic mechanisms of action and immune system and target tissue interactions to identify key differences between the treatments
- Exploring criteria to ensure relevant therapy selection based upon varying disease types, severity and patient immune status

**Zengli Guo**, Associate Director, Cell Therapeutics, **AstraZeneca**

## Reimagining Treg Modulation: Exploring Alternatives to IL-2

### 1.30 Harnessing Peptide-Major Histocompatibility Complex-Based Nanomedicines to Treat Autoimmunity by Expanding Antigen-Specific Tregs *In Vivo*

- Analyzing nanomedicines as effective triggers of endogenous Treg generation to modulate immunoregulation
- Describing the mechanisms of action involved in the pMHC nanomedicine platform to generate disease specific Tregs
- Exploring applications of pMHC nanomedicines in Liver autoimmunity, T1D and MS

**Pere Santamaria**, Chief Scientific Officer, **Parvus Therapeutics**

NEW DATA

### 2.00 Evaluating Clinical Challenges Associated with Allogeneic Therapies

- Assessing the risks of allogeneic therapies to ensure safe treatment development
- Addressing the persistence of allogeneic therapies without the need for deep lymphodepletion
- Discussing innovations to overcome manufacturing challenges for allogeneic therapies

**Birgit Schultes**, Chief Scientific Officer, **Intellia Therapeutics**

### 2.00 The NanoDisc Platform for Induction of Antigen-Specific Immune Tolerance

- Enabling disease-specific autoimmune therapy by lymph node and tolerogenic organ distribution
- Eliciting tolerizing dendritic cell signaling and bystander suppression
- Discussing applications to disease models

**Weston Daniel PhD**, Chief Development Officer, **EVOQ Therapeutics**

### 2.30 Panel Discussion: Comparing Allogeneic & Autologous Therapies: Ideal Biology Vs Real-World Effectiveness

- Comparing the need for treatment availability to treatment rejection risks
- Reviewing therapeutic outcomes associated with both therapeutic options to identify the balance between real-world efficacy and biology
- Highlighting current research and emerging strategies to enhance the success of both therapy types

**Moderator: Dan Shelly**, Chief Business Development Officer, **PoITreg**

**Birgit Schultes**, Chief Scientific Officer, **Intellia Therapeutics**

**Adel Nada**, Co-Founder & Executive Chairman, **Trutina Pharma**

### 2.30 Panel Discussion: Shaping the Future of Treg Modulators to Produce Cutting-Edge Therapies

- Exploring novel Treg modulators beyond IL-2 (including IL-35 and TNFR-2 agonists) to uncover new therapeutic capabilities
- Investigating emerging small molecules and biologic modulators to supercharge therapeutic development
- Discovering antibody-specific Treg modulation

**Moderator: Haining Huang**, President & Co-Founder, **Cytimm Therapeutics**

**Khaled Ali**, Director, Immunology Research, **GSK**

**Paul Peloso**, Chief Medical Officer, **COUR Pharmaceuticals**

**Daniela Cipolletta**, Senior Director, Immunology, **Seismic Therapeutic**

WELCOME

EXPERT SPEAKERS

AGENDA

PARTNER WITH US

REGISTER YOUR PLACE



# Conference Day One

## Wednesday, March 26

7th Annual  
**Treg-Directed  
Therapies Summit**  
March 25-27, 2025 | Boston, MA



3.00

### Afternoon Break & Poster Session

This is your opportunity to contribute to the conversation and share your cutting-edge research with this community while discovering exciting work carried out by your peers. To submit a poster, please contact [info@hansonwade.com](mailto:info@hansonwade.com).

## Leveraging Preclinical Disease Models to Successfully Evaluate Treatment Efficacy & Safety



**Payam Zarin**  
Associate Director,  
Discovery Research  
**GentiBio**

NEW  
DATA

4.00

### Harnessing *In Vivo* Disease Models to Turbocharge Treatment Success

- Utilizing mouse models to uncover the mechanism of action for Treg cell therapy in autoimmune and autoinflammatory diseases
- Identifying the properties of an ideal preclinical, *in vivo* model to provide insights for future model development
- Prioritizing translational relevance of key preclinical biomarkers in murine models of inflammatory diseases



**Tony Ting**  
Chief Scientific Officer  
**Kiji Therapeutics**

4.30

### Implementing *In Vivo* Disease Models in Treatment Analysis to Assess the Quality of Developing Treatments

- Discussing the ability of GvHD and IBD mouse models in replicating complex immune-cell interactions
- Exploring the potential of mouse models to assess treatment efficacy, persistence and safety
- Highlighting IL-10 expressing cell therapy preclinical data showcasing efficacy using preclinical models



**Fabien Depis**  
Independent Expert

5.30

### Chair's Closing Remarks

5.15

### End of Conference Day One

▀▀ The 7th Treg-Directed Therapies Summit allows for robust and engaging discussions with the leaders in the regulatory T-cell space. Regulatory T-cells present significant challenges and opportunities that are unique and distinct from other cell therapy modalities and having a unified summit to discuss these topics presents an amazing opportunity to advance the field ▀▀

**James Adams, Chief Technology Officer, Tr1x Bio, 2025 Speaker**

9

+1 617 455 4188 @ info@hansonwade.com

[www.treg-directed-therapies.com](http://www.treg-directed-therapies.com) Treg in Autoimmunity

hansonwade

WELCOME

EXPERT SPEAKERS

AGENDA

PARTNER WITH US

REGISTER YOUR PLACE

# Conference Day Two

## Thursday, March 27



7.30 Check-In & Coffee



**Fabien Depis**  
Independent Expert

8.20 Chair's Opening Remarks

### Cultivating Academic, Biotech & Pharma Collaborations to Revolutionize Treg Therapeutic Development

#### 8.30 Panel Discussion: Driving Industry Collaborations to Unlock New Therapeutic Opportunities

- Evaluating public and private partnerships between pharma and biotech companies institutions
- Discussing ideal criteria for company collaborations and investment to improve discovery efficiency
- Highlighting key strategies from successful collaborations to direct and refine future collaborative efforts

**Moderator:**



**Fabien Depis**  
Independent Expert



**Julie Di Paolo**  
Senior Director Immunology,  
Scientific Innovation Lead  
**Johnson & Johnson**



**Miguel Forte**  
Chief Executive Officer  
**Kiji Therapeutics**



**Dan Shelly**  
Chief Business  
Development Officer  
**PolTreg**

9.30

NEW  
DATA

#### Keynote Presentation: Leveraging Clinical Polyclonal Tregs for the Development of Modified & Engineered Tregs

- Harnessing effective data from clinically derived polyclonal Tregs
- Showcasing long-term clinical Type 1 Diabetes data
- Utilizing polyclonal Tregs to shape the next generation of Treg therapies



10.00 Morning Break & Networking

#### Treg Cell Therapy

#### Treg Modulators

##### Leveraging CAR-Tregs to Enhance Potency, Persistence & Safety

##### Exploring IL-2 Fusion Proteins & Muteins as Treg Modulators

###### 11.00 Developing CAR-Treg Therapies to Enhance Clinical Efficacy

- Discussing Treg engineering strategies to improve safety and efficacy
- Revealing insights into the ongoing LIBERATE clinical trial
- Exploring Treg stability and pharmacokinetics to enhance safety

**Marc Martinez-Llordella**, Co-founder & Vice President, Biology, **Quell Therapeutics**

###### 11.30 Designing CAR Tregs for Neurodegenerative Disease Therapy

- Targeting disease sites in the CNS
- Utilizing disease modifying molecules to improve therapeutic activity
- Harnessing CARs to improve Treg persistence in the CNS

**Charles Sentman**, Professor, Department of Microbiology & Immunology, **The Geisel School of Medicine at Dartmouth**, Scientific Founder, **Celdara Medical**

NEW  
DATA

###### 11.00 Analyzing Natural Glycosylated PEG-IL2v with Treg Bias for ALS & Autoimmune Diseases

- Designing the best IL-2v for chronic inflammatory diseases
- CTM201 is the first long-acting PEG-IL2v without compromising its bioactivity
- Examining the PK/PD and safety profiles of CTM201 in ALS patients

**Haining Huang**, President & Co-Founder, **Cytimm Therapeutics**

NEW  
DATA

###### 11.30 Exploring CUE-401: A Novel TGF-β/ IL-2 Fusion Protein for the Induction & Expansion of FOXP3+ Regulatory T-Cells

- TGF-β and IL-2 are two key signals for the induction of regulatory T-cell populations
- CUE-401 is a novel TGF-β and IL-2 directed therapy that is being developed for the selective expansion of regulatory T-cells *in vivo*
- Exploring the activity and mechanism of action of CUE-401

**Natasha Girgis**, Director, Translational Pharmacology, **Cue Biopharma**



12.00 Lunch Break & Networking

# Conference Day Two

## Thursday, March 27

### Refining the Manufacturing Process for Successful Treg Cell Therapy Scalability

#### 1.00 Elevating the Manufacturing Process to Identify & Produce Safe Cell Therapy Doses

- Outlining methods and approaches for the development of a closed and automated manufacturing process for Tr1-based cell therapies
- Detailing the operational and regulatory requirements for utilizing donor cell pooling as a technique to improve therapeutic outcomes
- Improving the security and robustness of the manufacturing process to consistently produce the appropriate dose

**James Adams**, Chief Technology Officer, **Tr1x Bio**

NEW DATA

### Designing Enhanced Immunomodulators to Improve Therapeutic Outcomes

#### 1.00 Exploring Strategies to Mitigate Immune Dysregulation Mediated by Foxp3 Deficiency

- Targeting dysregulated signaling pathways in Foxp3-deficient Tregs
- Metabolic reprogramming to harness fatal autoimmunity
- Examining the role of IL2 signaling and Foxp1 in maintaining Foxp3-deficient Treg identity

**Louis-Marie Charbonnier**, Assistant Professor of Pediatrics, **Harvard University**

NEW DATA

#### 1.30 Generating Potent, Stable & Off-the-Shelf Synthetic Tregs from CD4+ Tconv for the Treatment of Colitis & Beyond

- Outlining the process of converting CD4 cells to synthetic Tregs (synTregs) via gene engineering
- Highlighting the benefits of synTregs compared to tTregs as cellular therapy
- Showcasing preclinical efficacy data from GvHD and colitis mouse models

**Stefanie Koristka**, Principal Scientist, Cell Therapy, **Intellia Therapeutics**

NEW DATA

#### 1.30 The Poly-Pharmacology of S-4321, a Dual Cell -Bi-Directional PD-1 Agonist for the Treatment of Autoimmune & Inflammatory Diseases

- Discussing the role of inhibitory receptor in the maintenance of immune tolerance
- Highlight ongoing research initiatives on dual cell bi-directional PD-1 agonist
- Explore the intersection of Treg biology and PD-1 agonism

**Daniela Cipolletta**, Senior Director, Immunology, **Seismic Therapeutic**

NEW DATA

#### 2.00 Optimizing Treg Cell Expansion to Produce High-Quality Tregs

- Exploring methods of Treg expansion to improve scalability
- Identifying the ideal amount of Treg expansion to produce quality treatments
- Assessing approaches to prevent differentiation during Treg expansion

**James Mathew**, Professor, **Northwestern University**

#### 2.00 Clinical Evidence of Immune Tolerance Induction: Examples from Celiac Disease & Multiple Sclerosis

- Exploring antigen targeting to effectively modulate a range of autoimmune diseases
- Translating preclinical biology to clinical evidence: the role of regulatory T-cells in establishing immune tolerance
- Unveiling clinical evidence of regulatory T-cell activity (including bystander/linked suppression)

**Kristie Grebe**, Chief Scientific Officer, **Anokion**



### 2.30 Afternoon Break & Networking

### Identifying the Appropriate Target Population & Selecting the Correct Disease Indications

#### 3.00 Discussing Considerations when Determining Disease Indication

- Exploring disease analysis methods to identify indications in which Tregs can be effectively utilized
- Effectively unravelling complex mechanisms of action to find an appropriate disease indication
- Identifying the ideal disease to be tackled by Treg cell therapies and Treg modulators



**Paul Peloso**  
Chief Medical Officer  
**COUR  
Pharmaceuticals**

#### 3.30 Determining the Right Patient Population to Improve Clinical Outcomes

NEW DATA

- Discussing methods to sufficiently analyze patient characteristics to identify populations that will benefit TRACT kidney transplant treatments
- Identifying the right patient population when designing a clinical trial
- Providing an update on kidney transplant phase II



**Joseph Leventhal**  
Scientific Founder  
**Tract Therapeutics**



**Fabien Depis**  
Independent Expert

#### 4.00 Chair's Closing Remarks

#### 4.15 End of Treg-Directed Therapies Summit

# Partner With Us

## Your Exclusive Opportunity to Nurture New & Existing Relationships with Leading Treg Experts

Prominent biotech companies are searching for efficient, streamlined manufacturing processes and equipment, disease-specific patient tissue samples, engineering and sequencing equipment, complex *in vivo* and *in vitro* disease models, and more.

Help therapies progress from concept to clinic and position yourself at the forefront of innovation by partnering with the **7th Treg-Directed Therapies Summit**. We will work with you to build a bespoke partnership package that will allow you to make those essential connections with decision-makers that align with your 2025 commercial objectives.



### Position Yourself as an Expert

Seize the opportunity to position yourself as a recognized authority within the Treg market, captivating key decision-makers. Sharing your expertise allows you to solidify your standing as a trusted leader, and innovative pioneer in the Treg-directed therapies field.



### Uncover Market Insights

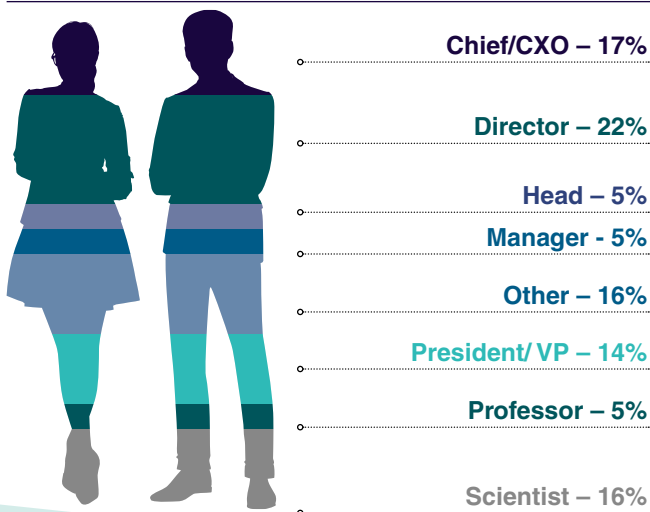
Acquire invaluable insights into the solutions and services that Treg-directed therapy developers are investing in. Armed with this intelligence, align your offerings to meet the evolving needs of biopharma as novel Treg therapies targeting autoimmunity and inflammation rapidly develop, staying one step ahead of your competitors.



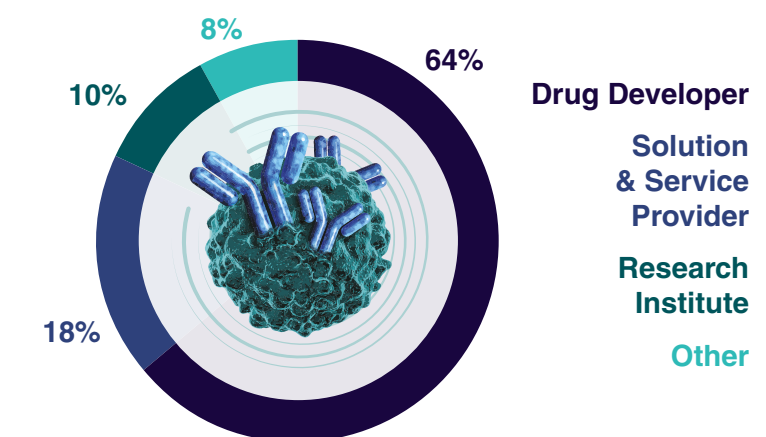
### Raise Brand Awareness

Extend your influence to potential clients and collaborators by leveraging unique branding opportunities before and during the conference. Utilize our platform to boost your visibility, creating a memorable impact that resonates with your target audience.

## SENIORITY OF ATTENDEES\*



## TYPES OF COMPANIES ATTENDING\*



Stats from 6th Treg-Directed Therapies Summit 2024

## GET INVOLVED



**Emilija Parnauskaite**  
Partnerships Director  
Tel: +1 617 455 4188  
Email: [sponsor@hansonwade.com](mailto:sponsor@hansonwade.com)



## Industry Partner

The Immunobiology Laboratories at Harvard Medical School and Massachusetts General Hospital perform studies on the basic biology TNF superfamily receptors, with an emphasis on autoimmunity and cancer. TNFR2 identifies Treg cells with the highest potency; in human cancers TNFR2 is overexpressed in the tumor microenvironment and in autoimmunity it is under expressed on Tregs. Recent data suggests agonistic TNFR2 antibodies can be made (Science Signaling 2020). For potent TNF superfamily agonism or antagonism, the final surface structures must have either tight hexagonal networks (agonism) or larger hexagonal networks (antagonism). Humanized antibodies to TNFR2 have now been produced using this principle with broad verification of these desired structural constructs.

[www.f Faustmanlab.org](http://www.f Faustmanlab.org)



## Event Partner

Beacon are a clinical trial and pipeline database solution designed in partnership with pharmaceutical professionals. Beacon track targeted therapies to provide accurate, indepth, and real-time information in the rapidly evolving drug development landscape. For more information or to request a demo, visit our website:

[www.beacon-intelligence.com](http://www.beacon-intelligence.com)

■ ■ Excellently organized with great speakers on critical topics. ■ ■

**Amy Rosenberg, Senior Director, Immunology & Consultant,  
EpiVax, 2024 Attendee**

## GET INVOLVED




**Emilija Parnauskaite**  
Partnerships Director  
Tel: +1 617 455 4188  
Email: [sponsor@hansonwade.com](mailto:sponsor@hansonwade.com)

# Ready to Register?

## 3 Easy Ways to Book

 [www.treg-directed-therapies.com/take-part/register](http://www.treg-directed-therapies.com/take-part/register)

 Tel: +1 617 455 4188

 Email: [info@hansonwade.com](mailto:info@hansonwade.com)



**Engage** with senior decision makers and scientific experts across cell therapy and biologics and build valuable connections with professionals in the Treg space



**Uncover** the latest data straight from the clinic and share lessons learned in the clinical translation of Treg-directed therapies



**Build** your knowledge and understanding of Treg biology, mechanisms of action and trafficking pathways to drive new opportunities for therapeutic developments

| Drug Developer Pricing              | Register & Pay By Wednesday, February 5 | On the Door Price |
|-------------------------------------|---|-------------------|
| Conference + Focus Day              | \$3,697 (Save \$500)                    | \$4,197           |
| Conference Only                     | \$2,699 (Save \$300)                    | \$2,999           |
| Academic Pricing                    | Register & Pay By Wednesday, February 5 | On the Door Price |
| Conference + Focus Day              | \$3,097 (Save \$500)                    | \$3,597           |
| Conference Only                     | \$2,299 (Save \$300)                    | \$2,599           |
| Solution & Service Provider Pricing | Register & Pay By Wednesday, February 5 | On the Door Price |
| Conference + Focus Day              | \$4,597 (Save \$500)                    | \$5,097           |
| Conference Only                     | \$3,399 (Save \$300)                    | \$3,699           |

\*To qualify for the drug developer rate the group or individual must have a publicly available pipeline and does not offer pay for services. Please visit the website for full pricing options or email [info@hansonwade.com](mailto:info@hansonwade.com)

\*\*To qualify for the academic rate you must be full time academic. Please visit the website for full pricing options or email [info@hansonwade.com](mailto:info@hansonwade.com)

Do you work for a Not-for-Profit organization? Email us at [info@hansonwade.com](mailto:info@hansonwade.com) to inquire about attending

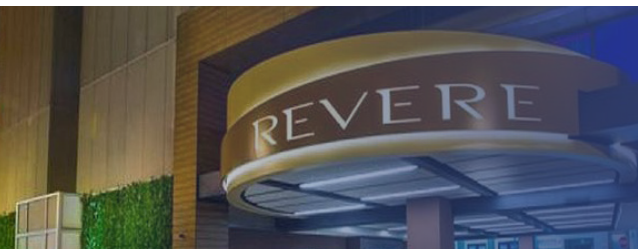
## Team Discounts\*\*

- 10% discount – 2 Attendees
- 15% discount – 3 Attendees
- 20% discount – 4+ Attendees

\*\*Please note that discounts are only valid when three or more delegates from one company book and pay at the same time.

Discounts cannot be used in conjunction with any other offer or discount. Only one discount offer may be applied to the current pricing rate.

Contact: [register@hansonwade.com](mailto:register@hansonwade.com)



## Venue

**Revere Hotel Boston Common**  
200 Stuart St, Boston, MA 02116, United States  
<https://www.reverehotel.com/>

### TERMS & CONDITIONS

Full payment is due on registration. Cancellation and Substitution Policy: Cancellations must be received in writing. If the cancellation is received more than 14 days before the conference attendees will receive a full credit to a future conference. Cancellations received 14 days or less (including the fourteenth day) prior to the conference will be liable for the full fee. A substitution from the same organization can be made at any time.

Changes to Conference & Agenda: Every reasonable effort will be made to adhere to the event programme as advertised. However, it may be necessary to alter the advertised content, speakers, date, timing, format and/or location of the event. We reserve the right to amend or cancel any event at any time. Hanson Wade is not responsible for any loss or damage or costs incurred as a result of substitution, alteration, postponement or cancellation of an event for any reason and including causes beyond its control including without limitation, acts of God, natural disasters, sabotage, accident, trade or industrial disputes, terrorism or hostilities.

Data Protection: The personal information shown and/or provided by you will be held in a database. It may be used to keep you up to date with developments in your industry. Sometimes your details may be obtained or made available to third parties for marketing purposes. If you do not wish your details to be used for this purpose, please write to: Hanson Wade Ltd, Eastcastle House, 27/28 Eastcastle Street, London, W1W 8DH, United Kingdom