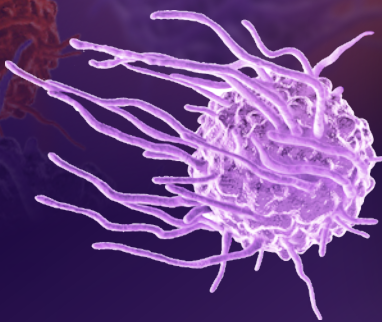


October 1-3, 2024 | Boston, MA
www.macrophage-directed-therapies.com



6th Annual

Macrophage-Directed Therapies Summit

Learning From the Past & Spearheading Clinical Acceleration

Unravel Complex Macrophage Biology, Accelerate Novel Target Discovery, & Drive Clinical Proof of Concept to Deliver the Blockbuster Potential of Macrophage Therapeutics in Oncology & Beyond

Expert Speakers Include:



Christopher Garri
Assistant Professor
Harvard Medical School



Bindu Varghese
Senior Director,
In Vivo CAR-M Lead
Carisma Therapeutics



Darren Ji
Chief Executive Officer
Elpiscience Biopharmaceuticals



Clayton Yates
Professor, Pathology,
Oncology & Urology
John Hopkins School of Medicine



Debashis Sahoo
Associate Professor
University of California, San Diego



Tatiana Novobrantseva
Chief Scientific Officer
NextPoint Therapeutics
Advisor
Verseau Therapeutics

Proud to partner with:



+1 617 455 4188 @ info@hansonwade.com

www.macrophage-directed-therapies.com Cell Immunotherapy



WELCOME

EXPERT SPEAKERS

AGENDA

PARTNER WITH US

REGISTER YOUR PLACE

Welcome to the 6th Macrophage-Directed Therapies Summit

8th Annual
Macrophage-Directed
Therapies Summit
October 1-3, 2024 | Boston, MA

Despite initial setbacks in CD47 targeting approaches in 2023, the macrophage space remains committed to showcasing the untapped potential of macrophages treating oncology and beyond. With the ongoing exploration of innovative targets and the field's eagerness to tackle translational, the community is excited to unveil new data demonstrating safety and proof of concept to re-invigorate momentum in this industry.

Returning to Boston, the **6th Macrophage-Directed Therapies Summit** is uniting industry experts across **R&D, Discovery, Biology, Translation, and Clinical Development** to explore novel approaches to targeting macrophages, accelerate *in vivo* and *ex vivo* CAR-M engineering, and novel administration techniques to effectively target macrophage cells.

Meet huge unmet patient need by deep diving into different cell sources being utilized (iPSC-derived and HSC-derived macrophages), investigate functional mechanisms of action and explore indications spanning oncology, autoimmune, CNS, and beyond.

This is your chance to **explore all facets of macrophage-directed therapies** with our stellar lineup of speakers from **Carisma Therapeutics, Elpiscience Biopharmaceuticals, Harvard Medical School, Pathios Therapeutics, ALX Oncology**, and many more! Delve into cutting-edge data and groundbreaking insights on macrophage biology, new combination approaches, and novel targets beyond CD47 to truly build a better strategy for control and manipulation of macrophage function safely and effectively.

What our speakers have to say:

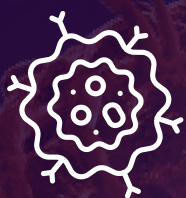
■ ■ A summit that brings together many macrophage-centered approaches is furthering the field that is still awaiting its biggest moment ■ ■

Tatiana Novobrantseva,
Advisor, **Verseau Therapeutics**

■ ■ This meeting has grown alongside the macrophage cell therapy field over the past 6 years – it provides a great forum to discuss this new technology and share challenges and learnings ■ ■

David Rodgers, Senior
Director, Macrophage
Cell Therapy, **Shoreline Biosciences**

Why You Can't Afford to Miss Out



Discover the evolving landscape of macrophage-directed therapies with sessions unveiling the latest advancements in inflammatory disease, CNS disease, and autoimmunity with **Attralus, Shoreline Biosciences**, and **Resolution Therapeutics**



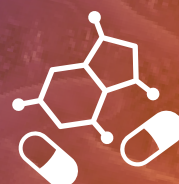
Explore novel targets, such as GPR65, Clever 1 Receptor antibody and CLEC1, with the latest data to uncover the diverse approaches companies are taking to utilize macrophage in the treatment of disease with **Pathios Therapeutics**, **OSE Immunotherapeutics**, **Faron Pharmaceuticals**, and **KAHR Medical**



Gain a deeper understanding of macrophage biology as experts redefine terminology to bring next level insights into macrophage plasticity, durability and mechanism of action with **Weill Cornell Medicine**, **Verseau Therapeutics**, **Oncoresponse**, and **DEM Biopharma**



Delve into the crucial role of biomarkers in patient selection and treatment efficacy, exchanging insights on best practices and considerations for selecting impactful biomarkers with **John Hopkins School of Medicine**, **University of California, San Diego**, and the **Whitehead Institute**



Optimize manufacturing processes and evaluate cell sources like iPSC and HSC-derived macrophages to unveil the ultimate starting material for scalability with **Shoreline Biosciences** and **Inceptor Bio**

WELCOME

EXPERT SPEAKERS

AGENDA

PARTNER WITH US

REGISTER YOUR PLACE

Your Expert Speakers

8th Annual
**Macrophage-Directed
Therapies Summit**
October 1-3, 2024 | Boston, MA



Jaume Pons
Chief Scientific Officer
ALX Oncology



Suganya Selvarajah
Director, Biology, CNS
Disease
Attralus



Leslie Nangle
Vice President, Research
aTyr Pharma



Bindu Varghese
Senior Director, *In Vivo*
CAR-M Therapies Lead
Carisma Therapeutics



Nenad Grmusa
Chief Executive Officer
DEM Biopharma



Darren Ji
Chief Executive Officer
Elpiscience
Biopharmaceuticals



Kader Thiam
Senior VP Preclinical
Models & Services
Genoway



Aditya Murthy
Director Immuno-Oncology
Gilead Sciences



Christopher Garriss
Assistant Professor
Harvard Medical School



Christine Rothe
Chief Development Officer
iOmx Therapeutics



Maximilian Richter
Director, Research &
Development
Inceptor Bio



Clayton Yates
Professor, Pathology,
Oncology, & Urology
**John Hopkins School of
Medicine**



Tomer Cohen
Chief Business Officer
KAHR Medical



Tatiana Novobrantseva
Chief Scientific Officer
NextPoint Therapeutics
Advisor
Verseau Therapeutics



Nicolas Poirier
Chief Executive Officer
OSE Immunotherapeutics



Kayleigh Thirlwell
Director, Macrophage
Biology
Resolution Therapeutics



Charles Garvin
Chief Executive Officer
Riptide Bioscience



David Rodgers
Senior Director,
Macrophage Cell Therapy
Shoreline Biosciences



Devika Schirloff
CMC Associate Director
SIRPant
Immunotherapeutics



Debashis Sahoo
Associate Professor
**University of California,
San Diego**



Rita Turpin
Researcher
**University of Turku &
Faron Pharmaceuticals**



Ugur Eskiocak
Chief Executive Officer
Voro Therapeutics



Nir Ben-Chetrit
Principle Investigator,
Department of Radiation
Oncology
Weill Cornell Medicine



Kipp Weiskopf
Whitehead Fellow
Whitehead Institute



Hillel Bachrach
Managing Partner
**20/20 Healthcare
Partners**



Subhrajit Saha
Professor (Tenured)
Director of Basic Science
Research
**The University of Kansas
Medical Center**



Takatoshi Soga
Senior Vice President,
Research
United Immunity

WELCOME

EXPERT SPEAKERS

AGENDA

PARTNER WITH US

REGISTER YOUR PLACE

Pre-Conference Workshop Day

Tuesday, October 1

Check-In & Coffee

7.30

Workshop A

8.30

Overcoming the Complex Nature of Macrophage Biology to Tackle Inconsistencies in Terminology & Categorization

Delving into the complex biology of macrophage to distinguish and categorize their interactions and signaling to other cell types, while addressing inconsistencies and oversimplification that often lead to confusion in this space.

Join this workshop to:

- Benchmark standard terminology and categorization of macrophage biology to facilitate clearer communication
- Refine macrophage categorization to better capture the complexities of macrophage biology
- Align biopharma and academia on the latest advancements in defining macrophages

Confirmed Speaker



Nir Ben-Chetrit
Principle Investigator
Department of
Radiation Oncology
**Weill Cornell
Medicine**



Aditya Murthy
Director Immuno-
Oncology
Gilead Sciences

Morning Break & Networking

10.30

Workshop B

11.00

Exploring Diverse Models & Assessing Their Suitability for Macrophage-Directed Therapies

Navigating a range of models currently used to address the complexity of macrophage therapies within human scenarios, and delving into recent challenges faced in minding suitable models.

Join this workshop to:

- Break down the current models in use, to reveal the scope of approaches in this space
- Discuss the advantages and limitations of different models in their ability to reflect complex biology
- Consider what models align seamlessly with your pipeline to select the best possible option

Confirmed Speaker



Debashis Sahoo
Associate Professor
**University of
California, San Diego**

Lunch Break & Networking

1.00

Workshop C

2.00

Addressing Challenges in Manufacturing to Outline a Range of Cell Sources & Optimize Methods

Discussing the complexities and challenges of manufacturing macrophages and exploring various cell sources, including iPSC-derived and HSC-derived cells.

Join this workshop to:

- Understand the manufacturing challenges posed by the non-proliferative nature of macrophages and explore techniques to reduce cell loss and maintain yield
- Focus on the manufacturing of iPSC-derived Macrophages (iMac) and assess their advantages
- Explore the manufacturing of autologous HSC-derived monocyte cell therapies

Confirmed Speaker



David Rodgers
Senior Director,
Macrophage Cell
Therapy
**Shoreline
Biosciences**

End of Pre-Conference Workshop Day

4.00

Conference Day One

Wednesday, October 2

8th Annual
**Macrophage-Directed
Therapies Summit**
October 1-3, 2024 | Boston, MA



7.10 Check-In & Coffee



Tatiana Novobrantseva
Chief Scientific Officer
NextPoint Therapeutics, Advisor,
Verseau Therapeutics

8.10 Chair's Opening Remarks

Unlocking Macrophages' Full Potential: Leveraging Proof-of-Concept Data to Chart the Path for Better Patient Outcomes

8.20 Fireside Chat: Contextualizing Macrophage-Specific Challenges in Comparison to Other Cell Types

- Mapping out the potential of cell therapies by outlining incentives for focusing on macrophages
- Considering broad-perspective challenges to draw comparisons between working with macrophages and other cell types
- Understanding the advantages of macrophages to propel this form of cell therapy



Charles Garvin
Chief Executive Officer
Riptide Bioscience



Tatiana Novobrantseva
Chief Scientific Officer
NextPoint Therapeutics
Advisor
Verseau Therapeutics



Subhrajit Saha
Professor (Tenured)
Director of Basic Science Research
The University of Kansas Medical Center



Darren Ji
Chief Executive Officer
Elpiscience Biopharmaceuticals

9.00 Data Showcase: Recent Key Data on Bispecific Macrophage Engagers Highlighting the Promise of Future Macrophage-Directed Therapies

- Presenting recent pre-clinical/clinical data that amplify the potential of macrophage-directed therapies
- Discussing the advantages of macrophage engagers over T-cell engagers through comparative analysis
- Contextualizing data by unveiling models and methods used



9.30 Morning Break & Speed Networking

As the community unites, this session will provide valuable networking time with your peers to foster new and lasting connections

Illuminating the Boundless Potential of Macrophage-Directed Therapeutics Through Exploration of Novel Targets



Rita Turpin
Researcher
University of Turku & Faron Pharmaceuticals

10.30 Exploring The Clever-1 Receptor Antibody as a Novel Mechanism to Target Macrophages in Cancer Treatment

- Utilizing Bexmarilimab to target Clever-1, a novel mode-of-action to activate macrophage antigen presentation (*ex vivo*, spatial transcriptomics MATINS trial)
- Overcoming ICI resistance by targeting Clever-1
- Exploring Clever-1 as a new player in hematological malignancies through the BEXMAB trial

Conference Day One

Wednesday, October 2

8th Annual
**Macrophage-Directed
Therapies Summit**
October 1-3, 2024 | Boston, MA

WELCOME

EXPERT SPEAKERS

AGENDA

PARTNER WITH US

REGISTER YOUR PLACE



Nicolas Poirier
Chief Executive Officer
OSE
Immunotherapeutics

11.00 CLEC1 Novel Myeloid Checkpoint & Cell-Death Sensor, with Application in Oncology & Inflammation

- Understanding the biology of CLEC1 to clarify its role as a novel target and explain its mechanism
- Outlining CLEC1's function in cancer treatment to underscore its therapeutic potential in this indication
- Mapping out CLEC1 function in inflammation and comparing its role in oncology



Tomer Cohen
Chief Business Officer
KAHR Medical

11.30 Learning from DSP107, a CD47x4-1BB bi-specific, to Advance Therapies into the Future & Consider the Continued Therapeutic Potential of CD47

- Improving target specificity and activity using bi-specific fusion protein
- Transforming safety profile and avoiding hematological toxicities
- Enhancing the treatment potential of solid and hematological malignancies



12.00 Lunch Break & Networking

Assessing the Potential of Combination Therapies to Advance Efficacy & Safety



Jaume Pons
Chief Scientific Officer
ALX Oncology

1.00 Considering the Rationale Behind Developing Combination Therapies to Maximize their Potential Effectiveness

- Strategizing the logical design of a combination therapy to enhance the efficacy of your macrophage-directed therapy
- Weighing up the benefits and drawbacks of combination therapies to grasp their appeal
- Reviewing the costs and other limiting factors associated with combination therapies



Takatoshi Soga
Senior Vice President,
Research
United Immunity

1.30 Overcoming Hostile Tumor Microenvironment With UI-102, a Pullulan Nanoparticle DDS-Encapsulated TLR7/8 Agonist That Actively Targets DC-SIGN-Expressing M2-Like Tumor-Associated Macrophages

- UI-102 significantly enhanced the efficacy of PD-1 and PD-L1 inhibitors in murine tumor models that are treatment resistant to checkpoint inhibitors
- UI-102 promoted polarization of M2-like tumor-associated macrophages (TAMs) into M1 resulting in the conversion of refractory "cold" tumors onto "hot" ones and increased recruitment of CD8+ T cells and NK cells into tumors
- Pullulan nanoparticle delivery to TAMs reduced the risk of cytokine release syndrome associated with TLR 7/8 agonists. First-in-human studies planned mid-2025



Ugur Eskiocak
Chief Executive Officer
Voro Therapeutics

2.00 Tumor-Activated Multi-Specific Biologics for CD47-Targeting Approaches with Improved Therapeutic Index

- Overcoming challenges and amplifying success in CD47-targeting therapies by harnessing clinical learnings
- Exploring multi-specific antibody-based formats with enhanced phagocytosis compared to the combination of individual components
- Developing and characterizing masked multi-specific biologics for tumor-selective activity



2.30 Afternoon Break & Poster Session



+1 617 455 4188 @ info@hansonwade.com

www.macrophae-directed-therapies.com Cell Immunotherapy



Conference Day One

Wednesday, October 2

6th Annual
**Macrophage-Directed
Therapies Summit**
October 1-3, 2024 | Boston, MA

WELCOME

EXPERT SPEAKERS

AGENDA

PARTNER WITH US

REGISTER YOUR PLACE

Delving into Plasticity & Durability to Overcome Break Down Challenges Inherent to Working With Macrophages



Tatiana Novobrantseva
Chief Scientific Officer
NextPoint Therapeutics
Advisor
Verseau Therapeutics

3.30

Reprogramming Macrophages for Therapeutic Benefits

- Describing the common biology underlying macrophage states across various cancer indications
- Highlighting targets for inducing desired macrophage reprogramming
- Mapping out the challenges associated with macrophage plasticity



Christine Rothe
Chief Development Officer
iOmx Therapeutics

4.00

IOMX-0675, a Highly Differentiated Fully Human LILRB1 and LILRB2 Cross-Specific Antibody, Effectively Repolarizes the Tumor Microenvironment, Resulting in Potent Tumor Cell Killing *in vitro* and *in vivo*

- Describing the differentiated binding profile of IOMX-0675, antagonizing with high potency the two immuno-suppressive receptors LILRB1 and LILRB2 while sparing highly homologous immune-activating family members
- Translating into superiority in macrophage repolarization and immune cell activation, as compared to mono-specific or other dual-targeting antibodies
- Outlining the best-in-class therapeutic potential for IOMX-0675



Nenad Grmusa
Chief Executive Officer
DEM Biopharma

4.30

DEM Biopharma: uncovering targets behind mechanisms of immune evasion in solid organ malignancies

- Relevance of tumor – macrophage interaction
- CRISPR screening platform
- Pipeline candidates with *in vitro* and some *in vivo* data.



Tatiana Novobrantseva
Chief Scientific Officer
NextPoint Therapeutics
Advisor
Verseau Therapeutics

5.00

Chair's Closing Remarks

5.10

End of Conference Day One

Macrophages are a promising immune cell population for therapeutic intervention. The 6th Macrophage-Directed Therapies Summit offers a detailed look-in from world-leading experts into the latest achievements and challenges to harness the potential of macrophages to intervene in many disease indications

Mike Thomas, Associate Director, Vesigen Therapeutics

Conference Day Two

Thursday, October 3

8th Annual
**Macrophage-Directed
Therapies Summit**
October 1-3, 2024 | Boston, MA

WELCOME

EXPERT SPEAKERS

AGENDA

PARTNER WITH US

REGISTER YOUR PLACE



8.00 **Check-In & Coffee**



Bindu Varghese
Senior Director, In Vivo
CAR-M Therapies Lead
Carisma Therapeutics

8.50 **Chair's Opening Remarks**

Discussing the Current Investment & Partnership Landscape to Equip Drug Developers with Insights to Secure Funding

9.00 **Examining the Investor Perspective to Secure Partnerships & Advance Therapeutic Potential**



Hillel Bachrach
Managing Partner
**20/20 Healthcare
Partners**

- Unveiling the criteria investors seek in small biotechs working on macrophages to set actionable goals
- Driving collaboration opportunities by learning what large pharmaceutical companies desire in partnerships
- Understanding the scope for investment and partnerships in this space to strategically plan your next steps

Unveiling the Potential of Macrophages-Directed Therapies in Therapeutic Areas Beyond Oncology

9.30 **How to enhance translatability of myeloid-targeted therapies in preclinical models**



Kader Thiam
Senior VP Preclinical
Models & Services
Genoway

- Outlining BRGSF-HIS mice: Immunodeficient mice displaying functional human lymphoid and myeloid compartments, without GvHD and side effects
- Examining myeloid cells functionality and assessing immune modulation induced by biologics in BRGSF-HIS model
- Showcase of assessment of immune targeting agents in immune checkpoint humanized model

10.00 **Supercharging the Therapeutics Potential of Macrophages in Inflammatory Diseases to Spotlight Positive Progression**



Kayleigh Thirlwell
Director, Macrophage
Biology
**Resolution
Therapeutics**

- Showcasing the use of macrophage-directed therapies in inflammatory organ disease to bring a focus to this therapeutic area
- Comparing macrophage-directed therapies to other forms of treatment for inflammatory organ diseases to underscore the therapeutic advantages of harnessing macrophages
- Sharing clinical data to highlight progression in addressing this disease indication



10.30 **Morning Break & Networking**



Leslie Nangle
Vice President,
Research
aTyr Pharma

11.00 **Navigating the Potential of Macrophage-Directed Therapeutics in Pulmonary Sarcoidosis**

- Sharing a novel target for treating inflammatory lung disease
- Understanding how macrophages can interact with neuropilin-2 (NRP2) to reduce inflammation
- Harnessing the therapeutic potential of macrophages to prevent the progression of pulmonary sarcoidosis



Suganya Selvarajah
Director, Biology, CNS
Disease
Attralus

11.30 **Driving the Potential of Macrophage-Directed Therapies in Treating Central Nervous System (CNS) Diseases**

- Outlining how macrophage/microglia-directed therapies may be an effective approach to treating diseases affecting the CNS
- Considering CNS-specific challenges and how this may impact the therapeutic potential of macrophage and microglia-directed therapies



+1 617 455 4188 @ info@hansonwade.com

www.macrophae-directed-therapies.com Cell Immunotherapy



Conference Day Two

Thursday, October 3

8th Annual
**Macrophage-Directed
Therapies Summit**
October 1-3, 2024 | Boston, MA

WELCOME

EXPERT SPEAKERS

AGENDA

PARTNER WITH US

REGISTER YOUR PLACE



David Rodgers
Senior Director,
Macrophage Cell
Therapy
**Shoreline
Biosciences**

12.00 Roundtable Discussion: Exploring the Use of Macrophage-Therapies to Treat Autoimmune Diseases & How Plasticity & Reprogramming Could Be Advantageous in this Indication

- Describing how the plasticity of macrophages in an anti-inflammatory phenotype could have therapeutic potential in autoimmune diseases
- Comparing macrophage-directed therapies with alternative cell therapies for autoimmune diseases
- Exploring the unique challenges in developing macrophage-directed therapies for autoimmune disease to break down barriers in this therapeutic area

Exploring Novel Approaches that Promise to Pioneer the Next Generation of CAR-M Therapies



Bindu Varghese
Senior Director, *In Vivo*
CAR-M Therapies Lead
Carisma Therapeutics

12.30 Engineering Myeloid Cells for Cancer – *Ex Vivo* & *In Vivo* Approaches

- Exploring CAR-M for solid tumor immunotherapy
- Reviewing the clinical program overview of Anti-HER2 CAR-M *ex vivo* cell therapy
- Utilizing direct *in vivo* CAR reprogramming using mRNA



1.00 Lunch Break & Networking



Maximilian Richter
Director, Research &
Development
Inceptor Bio

2.00 Next-Generation Engineering for Enhanced Myeloid Cell Therapies

- Enhancing function in monocytes and macrophages with novel CAR architectures
- Utilizing HSCs as a cell source for *ex vivo* monocyte cell therapies

Advancing Biomarker Development to Aid Patient Selection & Enhance Translatability



Clayton Yates
Professor, Pathology,
Oncology, & Urology
**John Hopkins School
of Medicine**

2.30 Identifying the Most Useful Biomarkers for Enhanced Patient Selection & Translatability

- Building an effective biomarker pipeline
- Considering the significance of diversity in biomarker selection
- Outlining the effective communication of using biomarkers in patient selection to regulatory bodies

3.00 Fireside Chat: Exploring the Advantages & Rationale of Biomarker-Driven Patient Targeting to Improve Clinical Outcomes

- Discussing the benefits of selecting patients using biomarkers to ensure accurate therapy alignment
- Assessing the range of biomarkers and their different uses in distinguishing suitable patients



Kipp Weiskopf
Whitehead Fellow
Whitehead Institute



Debashis Sahoo
Associate Professor
**University of California,
San Diego**



3.30 Afternoon Break & Networking

Conference Day Two

Thursday, October 3

8th Annual
**Macrophage-Directed
Therapies Summit**
October 1-3, 2024 | Boston, MA

WELCOME




EXPERT SPEAKERS

AGENDA

PARTNER WITH US

REGISTER YOUR PLACE

Evaluating & Selecting the Most Effect Modes of Delivery & Administration for Your Pipeline to Ensure Targeted Treatment

 Devika Schirloff CMC Associate Director SIRPant Immunotherapeutics	4.00	Unveiling the Potential of Intertumoral Administration and Comparing its Advantages with Other Techniques <ul style="list-style-type: none">• Describing how intertumoral administration of macrophage-directed therapies works• Outlining the advantages of intertumoral administration to underscore its potential• Comparing intertumoral administration with intravenous administration
 Christopher Garriss Assistant Professor Harvard Medical School	4.30	Immune Stimulatory Macrophage-Directed Nanoparticles for Cancer Immunotherapy <ul style="list-style-type: none">• Using key macrophage phenotype features to polarize them using small molecule drug combinations• Exploring a range of immuno-stimulatory nanoparticles with an affinity for macrophages
 Bindu Varghese Senior Director, In Vivo CAR-M Therapies Lead Carisma Therapeutics	5.00	Chair's Closing Remarks
	5.10	End of Conference Day Two

🗨️ I'm excited to connect with leaders in the macrophage therapy space and discuss how we as a field can realize the full potential of macrophages, both as a therapeutic target and therapeutic modality 🗨️

Director, Inceptor Bio

Our Media Partners

 **PHARMIWEB.COM**

 **STEMCELL™
TECHNOLOGIES**
**SCIENCE
NEWS**

 **BioPharma
Asia**
The Journal for Asia's Pharmaceutical and Biopharmaceutical Industry

Gene Therapy Net .com
The starting point for all your information about gene therapy
**News
Articles
Meetings**



Expertise Partner

United Immunity is developing a Myeloid Targeting Platform™ comprising of Cholesteryl Pullulan (CHP) based nanogels and lipid nanoparticles to target therapeutic payloads (small molecules, mRNA, etc.) to macrophages and dendritic cells for the treatment of cancer, fibrosis, infectious, autoimmune, and inflammatory diseases. UI-102 applies CHP to precisely deliver a TLR7/8 agonist to tumor-associated macrophages and change refractory cold tumors into hot tumors. United's platform is also being applied to T-cell booster vaccines and *in vivo* CAR-macrophages.

www.unitedimmunity.co.jp



Expertise Partner

iOmx is a clinical-stage biotech company that harnesses deep tumour immuno-biology insights along with its proprietary iOTarg™ target screening platform, to generate novel treatments for the most prevalent solid tumour indications.

The company is translating unexplored immune evasion biology into a growing pipeline of biomarker-enabled drug programs. Focused on developing drugs with single agent activity, iOmx is creating new backbone therapies in a modality-open fashion. By applying its comprehensive drug discovery & development expertise, iOmx is committed to shaping the future of cancer therapy.

www.iomx.com



Expertise Partner

At genOway, we recognize the crucial role that preclinical research plays in the success of new therapies in clinical settings. Our team of experts brings together decades of experience in designing genetically modified models and a profound understanding of biological physiology to provide unmatched preclinical solutions.

Our collaborative approach, rooted in a deep understanding of your specific needs and complemented by our expertise, strives to define the best solution to predict the success of your research. Join us on a journey of scientific advancement for the benefit of human health.

www.genoway.com



Exhibition Partner

At Immunovive, we strive to make a difference in the world of immunotherapeutics. Our mission is to accelerate life science research and biologics discovery by providing a premium antibody discovery service rapidly and affordably. Our BinderGen™ HTP hybridoma platform generates diverse high-affinity monoclonal antibody binders in 6-8 weeks enabling discovery of critical reagents, therapeutic leads, and substrates for the development of multimodalities. Decades of leadership, expertise, and innovation is applied to each and every project culminating in an optimized research plan designed to deliver high-quality monoclonal antibodies at industry-leading timelines. All operations are conveniently located in the Greater Boston area and our clients retain full ownership of antibodies that we discover together.

www.immunovivellc.com



Event Partner

Nomic is doing for protein profiling, what Illumina did for DNA sequencing. Our core technology, the nELISA, is a next-gen immunoassay platform that transforms the ELISA into a high-throughput, high-content, and high-versatility tool.

Today we developed the nELISA for high-throughput drug discovery scientists, enabling them profile 100s of proteins at 10x higher throughput and 10x lower cost compared to existing solutions. We're offering the nELISA through early access programs to HTS groups in top pharmas as well as pioneering biotechs in the space.

Our goal is to create a ubiquitous technology that consolidates the broad range of legacy immunoassay toolkits that scientists use today with a single platform that can carry the science end-to-end, from discovery all the way to the clinic.

www.nomic.bio

GET INVOLVED



Megan Poole

Partnerships Director

Tel: +1 617 455 4188

Email: sponsor@hansonwade.com

Partner with us

Your Unique Opportunity to Foster New & Existing Relationships in the Rapidly Expanding Macrophage-Directed Therapies Field!

Join us at the **6th Macrophage-Directed Therapies Summit**, where leaders in **R&D, Discovery, Biology, Translation**, and **Clinical Development** converge for unmatched collaboration and networking. Solidify your status as a trusted CRO, assay provider, proteomic analyzer, or CDMO to key decision-makers and support them in revitalizing pipelines and unleashing the full potential of macrophage therapeutics



Why Partner?

Develop strategic relationships with industry leaders pioneering innovative novel macrophage targets. Tailor a partnership package with us to ensure you **exceed your commercial goals** for 2024.



Who Will You Meet?

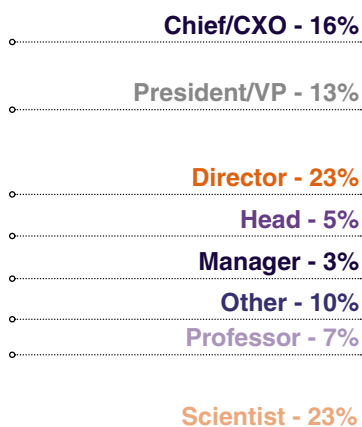
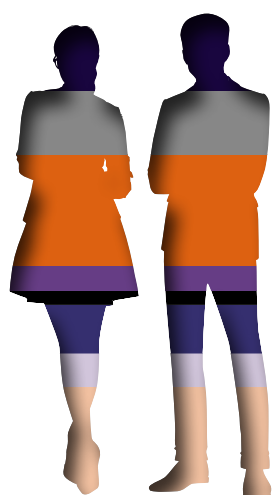
Expand your network and cultivate new **client** relationships by directly engaging with trailblazers in the macrophage-directed therapy space. Understand how your company's services can support their groundbreaking work.



Why Showcase?

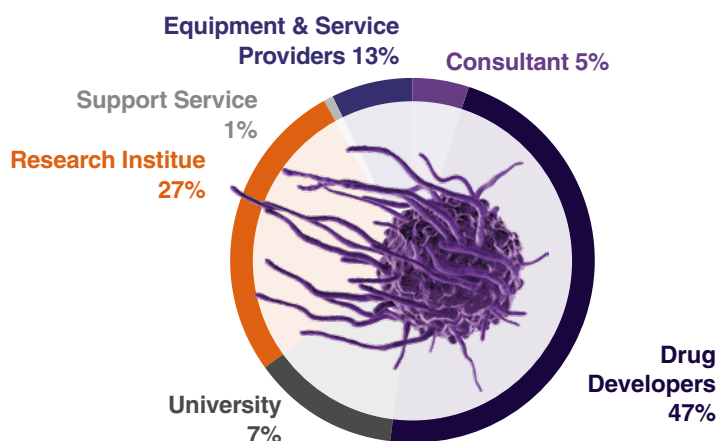
Elevate your brand among a niche audience and stand out from competitors with a **bespoke package** that will earn the trust of biopharma companies seeking assistance with their macrophage-directed pipelines.

SENIORITY OF ATTENDEES*



*Statistics Taken from 5th Macrophage-Directed Therapies Summit

TYPES OF COMPANIES ATTENDING*




GET INVOLVED




Megan Poole
Partnerships Director
Tel: +1 617 455 4188
Email: sponsor@hansonwade.com

Ready to Register?

3 Easy Ways to Book

 www.macrophage-directed-therapies.com/take-part/register

 Tel: +1 617 455 4188

 Email: info@hansonwade.com



Explore innovative advancements in macrophage-directed therapies, from novel targets to indication expansion, unlocking their potential in oncology and beyond.



Build your understanding of complex macrophage biology by exploring tumor microenvironment and macrophage reprogramming to align academia and biopharma on macrophage terminology and categorization.



Engage with the vibrant macrophage therapeutics community to forge meaningful relationships with like-minded experts and collaboratively address challenges.

Drug Developer Pricing	Register & Pay by Monday, September 30	On the Door Price
Conference + 3 Workshops	\$4,097 (Save \$100)	\$4,197
Conference + 2 Workshops	\$3,697 (Save \$100)	\$3,797
Conference + 1 Workshop	\$3,298 (Save \$100)	\$3,398
Conference Only	\$2,899 (Save \$100)	\$2,999

Academic Pricing	Register & Pay by Monday, September 30	On the Door Price
Conference + 3 Workshops	\$3,497 (Save \$100)	\$3,597
Conference + 2 Workshops	\$3,164 (Save \$100)	\$3,264
Conference + 1 Workshop	\$2,831 (Save \$100)	\$2,931
Conference Only	\$2,499 (Save \$100)	\$2,599

Service Provider Pricing	Register & Pay by Monday, September 30	On the Door Price
Conference + 3 Workshops	\$4,997 (Save \$100)	\$5,097
Conference + 2 Workshops	\$4,531 (Save \$100)	\$4,631
Conference + 1 Workshop	\$4,066 (Save \$100)	\$4,166
Conference Only	\$3,599 (Save \$100)	\$3,699

*To qualify for the drug developer rate your company must have a public drug pipeline. Please visit the website for full pricing options or email info@hansonwade.com

**To qualify for this rate, you must have a public drug pipeline and less than 30 full-time employees, or be a full-time academic. Please visit the website for full pricing options or email info@hansonwade.com

Do you work for a Not-for-Profit organization? Email us at info@hansonwade.com to inquire about attending

Team Discounts**

- 10% discount – 3 Attendees
- 15% discount – 4 Attendees
- 20% discount – 5 + Attendees

**Please note that discounts are only valid when three or more delegates from one company book and pay at the same time.

Discounts cannot be used in conjunction with any other offer or discount. Only one discount offer may be applied to the current pricing rate.

Contact: register@hansonwade.com

Venue

Hilton Boston Back Bay

40 Dalton St, Boston, MA 02115, United States

www.hilton.com

TERMS & CONDITIONS

Full payment is due on registration. Cancellation and Substitution Policy: Cancellations must be received in writing. If the cancellation is received more than 14 days before the conference attendees will receive a full credit to a future conference. Cancellations received 14 days or less (including the fourteenth day) prior to the conference will be liable for the full fee. A substitution from the same organization can be made at any time.

Changes to Conference & Agenda: Every reasonable effort will be made to adhere to the event programme as advertised. However, it may be necessary to alter the advertised content, speakers, date, timing, format and/or location of the event. We reserve the right to amend or cancel any event at any time. Hanson Wade is not responsible for any loss or damage or costs incurred as a result of substitution, alteration, postponement or cancellation of an event for any reason and including causes beyond its control including without limitation, acts of God, natural disasters, sabotage, accident, trade or industrial disputes, terrorism or hostilities.

Data Protection: The personal information shown and/or provided by you will be held in a database. It may be used to keep you up to date with developments in your industry. Sometimes your details may be obtained or made available to third parties for marketing purposes. If you do not wish your details to be used for this purpose, please write to: Hanson Wade Ltd, Eastcastle House, 27/28 Eastcastle Street, London, W1W 8DH, United Kingdom